



PHILIPS

SERVICE

Scientific & Analytical Equipment
 Test & Measuring Instruments
 Industrial Controls
 Welding
 Industrial Data-processing Systems

**Scientific &
 Industrial
 Equipment
 Division**

800215

TEST AND MEASURING EQUIPMENT

OSC 60

OSCILLOSCOPE PM 3234

Already published: OSC 13 - OSC 26.
 Subject: Flash-over problem inside C.R.T.

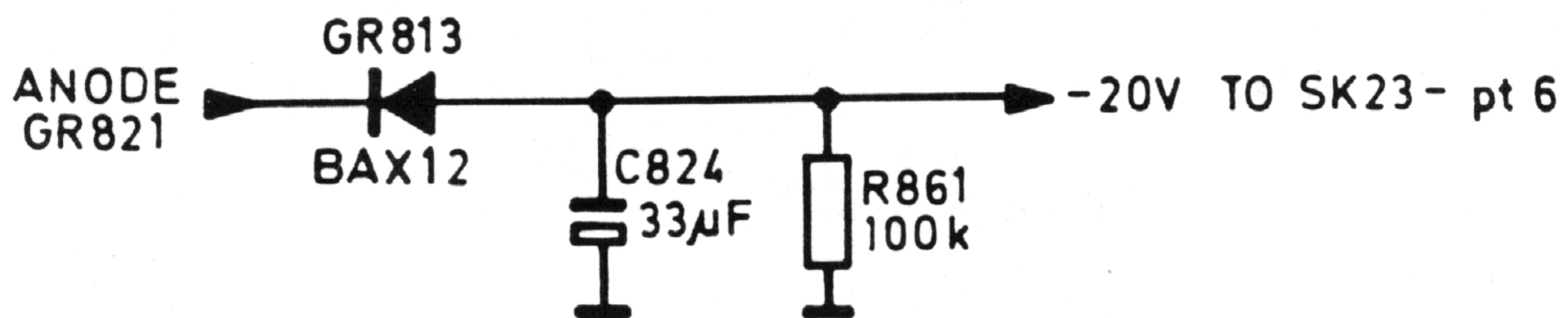
- In some instruments flash-over inside the C.R.T. occurs.
 The C.R.T. display remains then more or less green instead of just black, after pushing the ERASE-button.
DON'T REPLACE THE C.R.T. unless you have tried the following modification.
 In most cases a solution to this problem can be found by replacement of the E.H.T. unit by a modified one.
 This modified type of E.H.T. unit has a reduced internal resistance (R_i).
 The modified E.H.T. unit will be delivered under the old service ordering number: 5322 216 54109 and can be recognized by the number 4022 246 0235 which is printed on its housing.
 (The new unit can also be used for service replacement in older instruments.)

Note: After replacement of a C.R.T. or an E.H.T. unit the instrument must be checked and adjusted again.

- During the production of the /12 version a modification is introduced to increase the memory off voltage from -30 V to -50 V , because of changed C.R.T. specification.

It is not necessary to modify the instrument in this way if a C.R.T. has to be replaced UNLESS a modification sheet OSC 61 is accompanying the replacement C.R.T. from Concern Service Centre.

As long as possible, Concern Service Centre will deliver, tested C.R.T.'s for which it is not necessary to modify the instrument.



The print track between SK23 pt6 and R1043 on the storage unit is interrupted.

