

FIELD REPLACEABLE UNIT DOCUMENTATION

Satellite™ **A20 Series**

GENERAL INFORMATION

Tools Required for Proper Disassembly and Reassembly:

- 1. Phillips Screwdriver (Size 0&1)**
- 2. 4mm Flat head Screwdriver**
- 3. Case Separator**
- 4. ESD Wrist Strap**
- 5. ESD mats**
- 6. Tweezers**

Before attempting any of the following procedures, make sure that the main battery and AC adaptor is not connected to the unit and the environment in which you are working on is protected from Electro-Static Discharge(ESD).

TOSHIBA

Tough Enough for Today's World.

FIELD REPLACEABLE UNIT DOCUMENTATION

SatelliteTM **A20 Series**

TABLE OF CONTENTS:

- 1. BATTERY PACK REMOVAL**
- 2. OPTIONAL PC CARD REMOVAL**
- 3. SELECT BAY REMOVAL**
- 4. DVD-R/-RW DRIVE DISASSEMBLY**
- 5. HDD REMOVAL**
- 6. MODEM BOARD REMOVAL**
- 7. CPU FIN REMOVAL**
- 8. CPU REMOVAL**
- 9. COOLING FAN REMOVAL**
- 10. KEYBOARD REMOVAL**
- 11. MEMORY MODULE REMOVAL**
- 12. SWITCH BOARD REMOVAL**
- 13. WIRELESS LAN CARD REMOVAL**
- 14. TOP COVER REMOVAL**
- 15. TOUCH PAD REMOVAL**
- 16. FRONT MEMBRANE SWITCH REMOVAL**
- 17. USB BOARD REMOVAL**
- 18. RTC BATTERY REMOVAL**
- 19. SOUND BOARD REMOVAL**
- 20. SYSTEM BOARD REMOVAL**
- 21. 15" DISPLAY MASK REMOVAL**
- 22. FL INVERTER AND 15" LCD REMOVAL**

TOSHIBA

Tough Enough for Today's World.

FIELD REPLACEABLE UNIT DOCUMENTATION

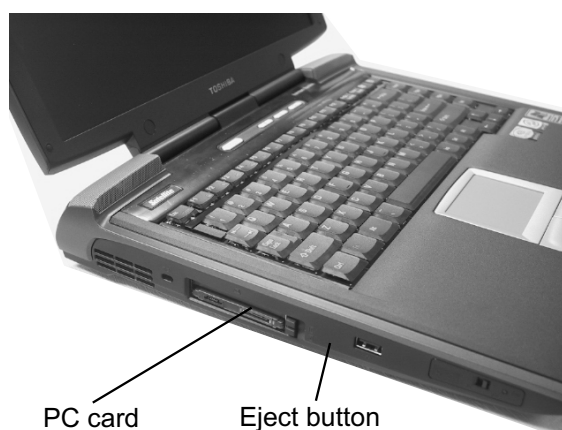
SatelliteTM A20 Series

BATTERY PACK REMOVAL



1. Turn the computer upside down as shown.
2. Slide the **battery release lever** in the direction of the arrow.
3. Lift out the **battery**.

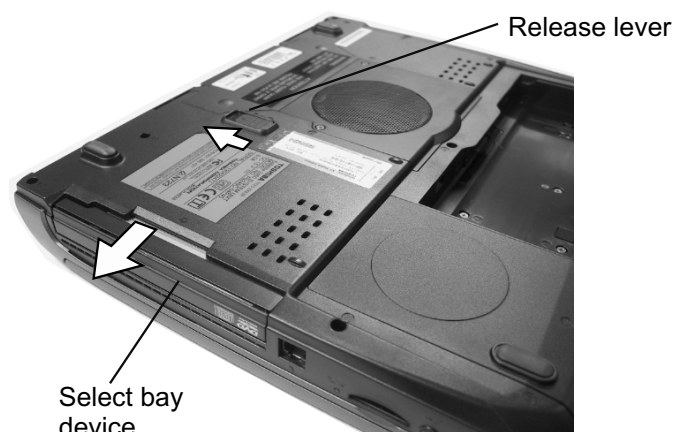
OPTIONAL PC CARD REMOVAL



1. Press the **eject button** for the PC card you want to remove.
2. Press the extended **eject button** to pop the PC Card out.
3. Grasp the **PC card** and remove it.

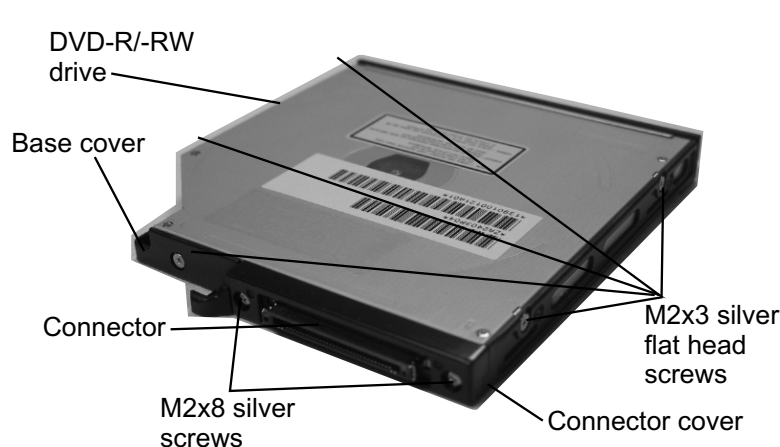
NOTE: Before removing any PC Card device, make sure it is "STOPPED" in the PC Card manager.

SELECT BAY REMOVAL



1. Turn the computer upside down.
2. Slide the **release lever** in the direction of the arrow.
3. Pull out the **select bay drive**.

DV-R/-RW DRIVE DISASSEMBLY



1. Remove **five M2x3 silver flat head screws** securing the base cover and lift out the **cover**.
2. Remove **two M2x8 silver screws** securing the connector cover.
3. Remove the **connector cover** and the **connector** from the DVD-R/-RW drive.

TOSHIBA

Tough Enough for Today's World.

FIELD REPLACEABLE UNIT DOCUMENTATION

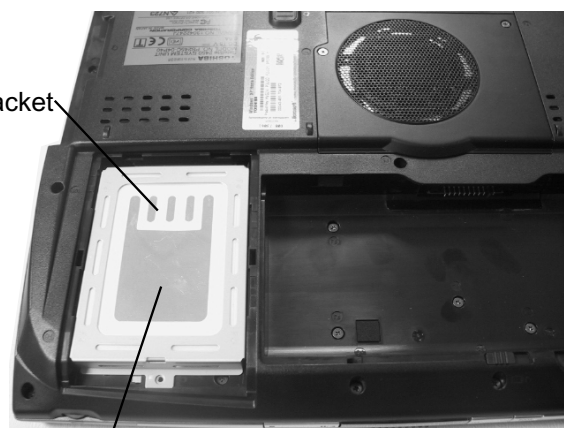
SatelliteTM A20 Series

HDD REMOVAL



M2.5x4 black flat head screw

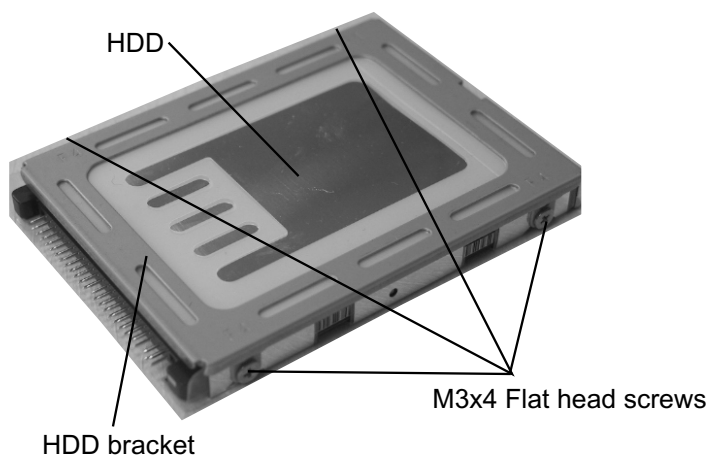
1. Turn the computer upside down.
2. Remove **one M2.5x4 black flat head screw** securing HDD cover.
3. Remove the **HDD cover**.



HDD assy

4. Grasp the **HDD bracket handle** and pull to disconnect the HDD assembly.
5. Lift the **HDD assembly** out of the HDD bay.

HDD REMOVAL



6. Remove **four M3x4 brass flat head screws** securing the HDD bracket to the drive.
7. Lift out the **HDD**.

MODEM BOARD REMOVAL



M2x4 flat head silver screws

Plastic insulator

1. Peel off the **plastic insulator** covering the modem board.
2. Remove **two M2x4 flat head silver screws** securing the modem board
3. Disconnect the **modem board** from PJ2900 on the system board and then the **modem cable** from JP1 on the modem board.

TOSHIBA

Tough Enough for Today's World.

FIELD REPLACEABLE UNIT DOCUMENTATION

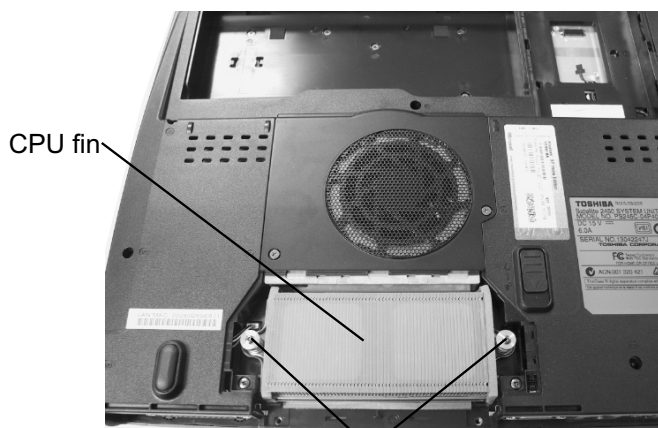
SatelliteTM A20 Series

CPU FIN REMOVAL



M2.5x6 black flat head screws

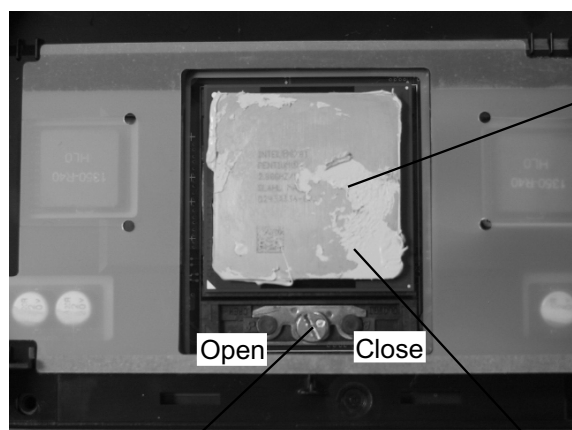
1. Turn the computer upside down.
2. Remove **two M2.5x6 black flat head screws** securing the CPU fin cover.
3. Lift out the **CPU fin cover**.



M2x18 black screws

4. Remove **two M2x18 black screws** securing the CPU fin.
5. Lift out the **CPU Fin**.

CPU REMOVAL

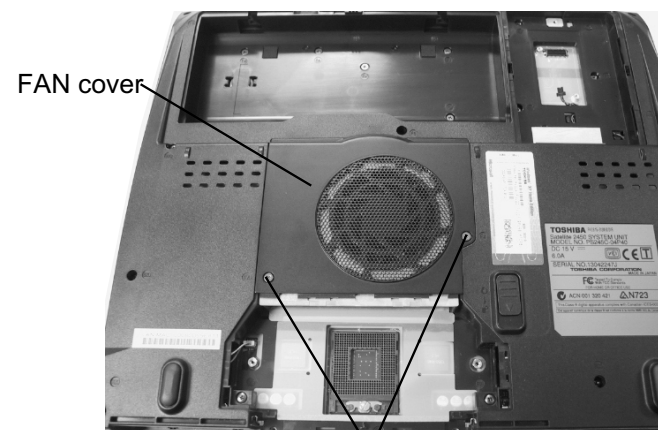


CPU lock

Silicone grease

1. Insert a **flat head screwdriver** to the **CPU lock** and rotate it counter-clockwise to unlock the **CPU**.
2. Lift out the **CPU**.

COOLING FAN REMOVAL



M2.5x4 black flat head screws

1. Remove **M2.5x4 black flat head screws** securing the FAN cover.
2. Lift out the **FAN cover**.

TOSHIBA

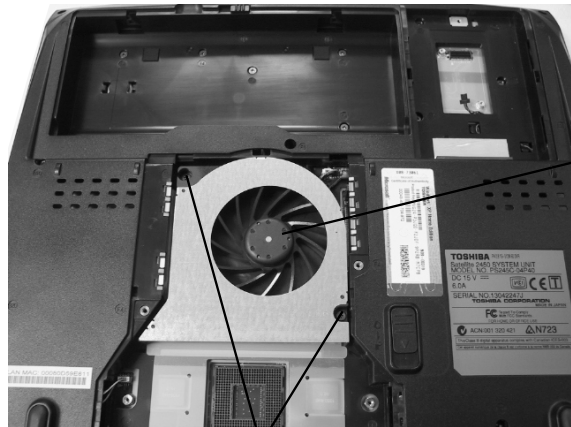
Tough Enough for Today's World.

FIELD REPLACEABLE UNIT DOCUMENTATION

SatelliteTM

A20 Series

COOLING FAN REMOVAL

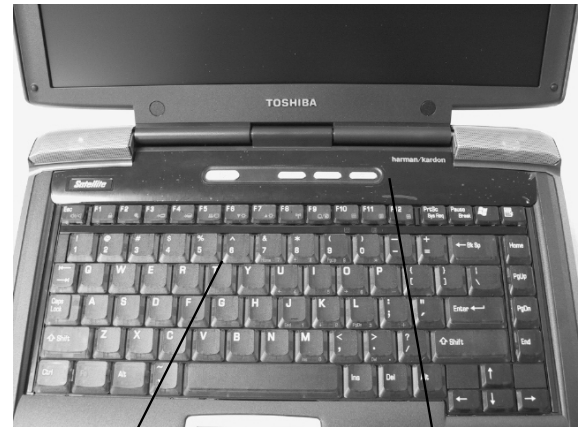


Cooling FAN

M2.5x6 black flat head screws

1. Remove **two M2.5x6 black flat head screws** securing the cooling fan.
2. Lift out the **cooling fan**.

KEYBOARD REMOVAL

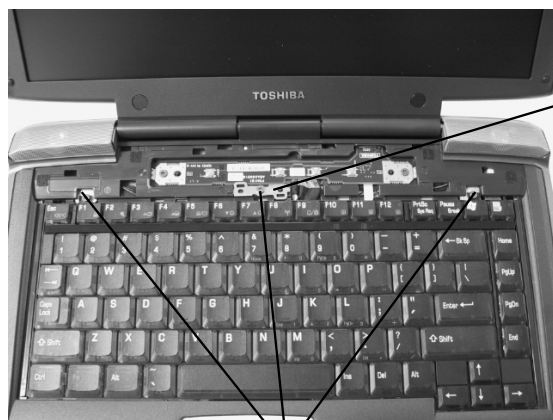


Keyboard

Keyboard holder

1. Turn the computer right side up and open the display panel.
2. Using the **case separator**, unlatch the **keyboard holder** at the top of the keyboard.

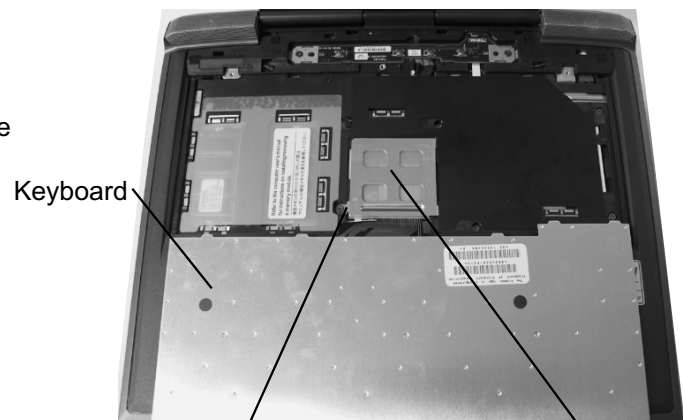
KEYBOARD REMOVAL



Keyboard holder plate

M2.5x4 black flat head screws

3. Remove **two M2.5x4 black flat head screws** securing the keyboard.
4. Remove **one M2.5x4 black flat head screw** securing the keyboard holder plate and lift out the plate.



Keyboard

M2.5x6 black flat head screws

Keyboard support plate

5. Lift out the **keyboard** and set it as shown above.
6. Remove the **one M2.5x6 black flat head screw** securing the keyboard support plate and lift out the plate.

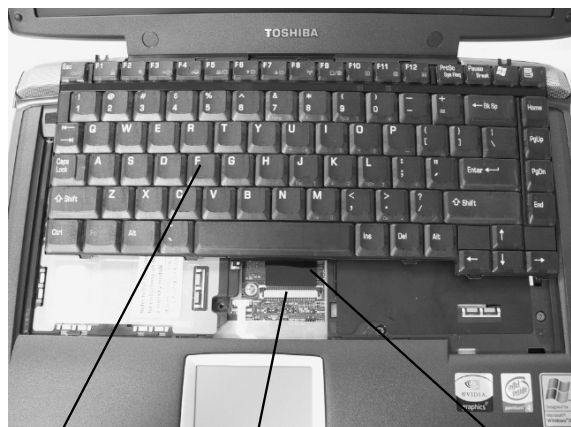
TOSHIBA

Tough Enough for Today's World.

FIELD REPLACEABLE UNIT DOCUMENTATION

SatelliteTM A20 Series

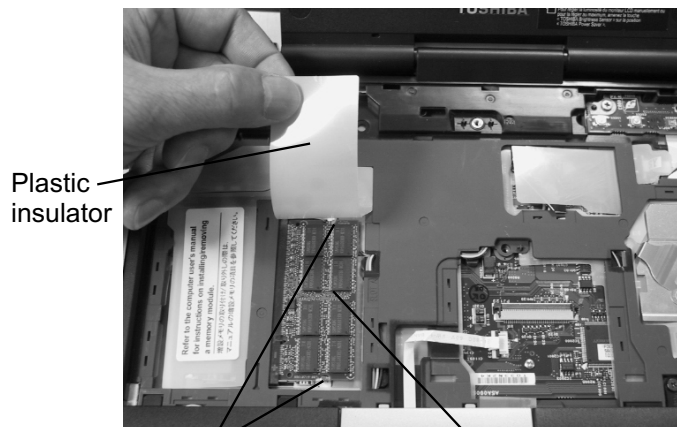
KEYBOARD REMOVAL



Keyboard CN7 Keyboard cable

7. Set the **keyboard** as shown above..
8. Disconnect the **keyboard cable** from **PJ123** on the system board.
9. Lift out the **keyboard**.

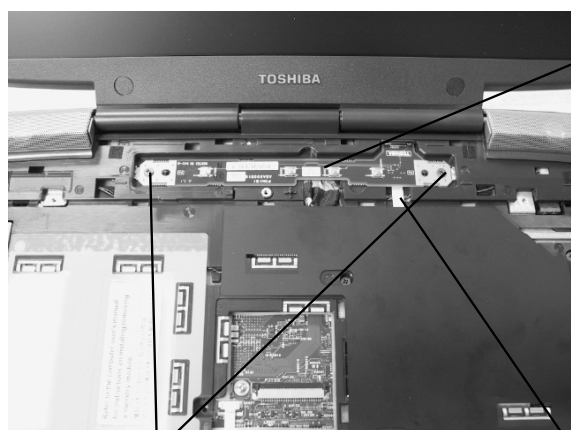
MEMORY MODULE REMOVAL



Plastic insulator Memory clips Memory module

1. Lift up the **plastic insulator** covering the memory slot.
2. Spread the **memory clips** outward and pull the **memory module** out of the connector on a 30 degree angle.

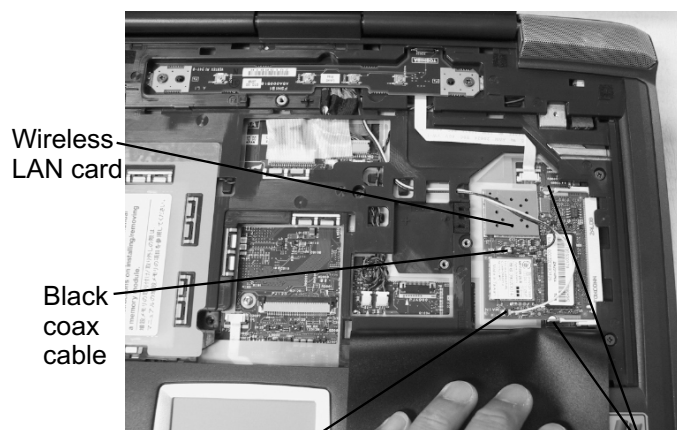
SWITCH BOARD REMOVAL



M2.5x4 black flat head screws Switch board

1. Remove **two M2.5x4 black flat head screws** securing the sensor switch board.
2. Disconnect the **switch board cable** from **PJ2027** on the back side of the switch board.
3. Lift out the **switch board**.

WIRELESS LAN CARD REMOVAL



Wireless LAN card Black coax cable White coax cable Mini-PCI connector clips

1. Lift up the **plastic insulator** covering the wireless LAN card.
2. Disconnect the **black** and **white coax** from the wireless LAN card.
3. Spread the **Mini-PCI connector clips** and pull the **Wireless LAN card** out of the connector about 30 degree angle.

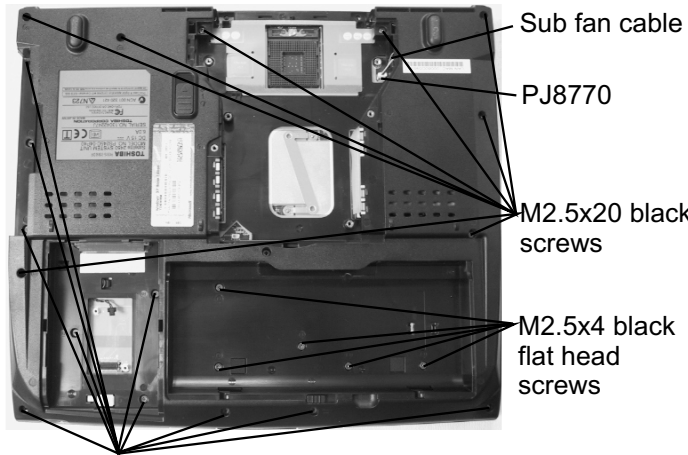
TOSHIBA

Tough Enough for Today's World.

FIELD REPLACEABLE UNIT DOCUMENTATION

SatelliteTM A20 Series

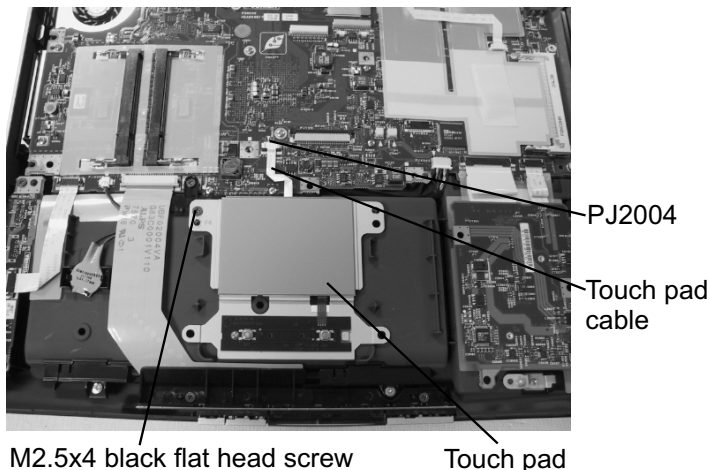
TOP COVER REMOVAL



M2.5x6 black flat head screws

1. Turn the computer upside down.
2. Disconnect the **sub fan cable** from **PJ8770**.
2. Remove **twenty three screws** securing the bottom cover:
 - 5 M2.5x4 black flat head screws
 - 10 M2.5x6 black flat head screws
 - 8 M2.5x20 black screws

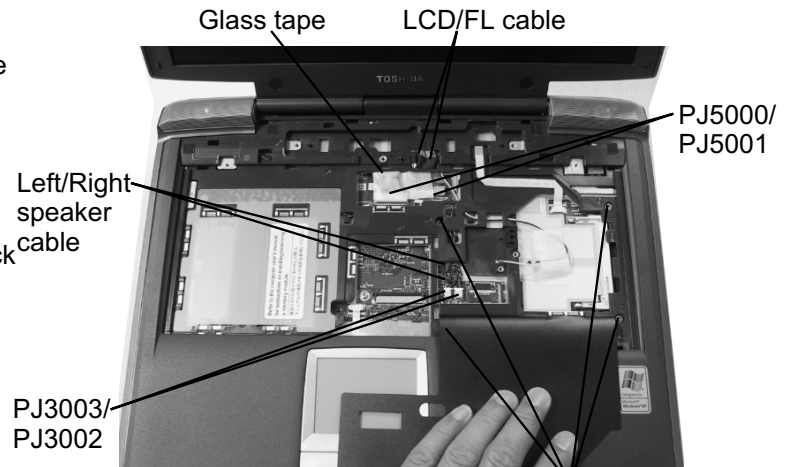
TOUCH PAD REMOVAL



M2.5x4 black flat head screw

Touch pad

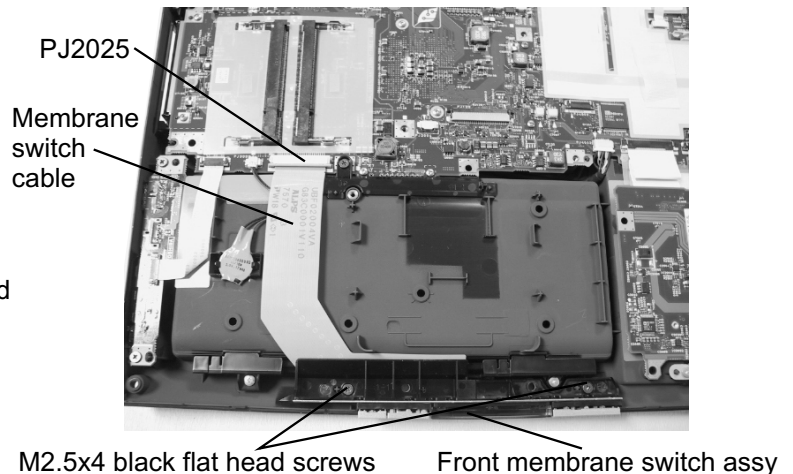
1. Disconnect the **touch pad cable** from **PJ2004** on the system board.
2. Remove **one M2.5x4 black flat head screw** securing the touch pad.
3. Lift out the **touch pad**.



M2.5x6 black flat head screws

3. Turn the computer right side up.
4. Peel off the **glass tape**. Disconnect the **LCD/FL cable** from **PJ5000/PJ5001** and **Left/Right speaker cables** from **PJ3003/PJ3002** on the system board.
5. Remove **four M2.5x6 black flat head screws** securing the top cover and lift out the top cover.

FRONT MEMBRANE SWITCH REMOVAL



M2.5x4 black flat head screws

Front membrane switch assy

1. Disconnect the **membrane switch cable** from **PJ2025** on the system board.
2. Remove **two M2.5x4 black flat head screws** securing the front membrane switch assembly.
3. Lift out the **front membrane switch assembly**.

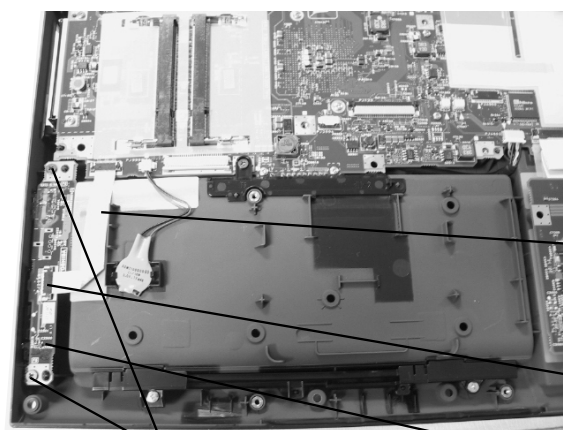
TOSHIBA

Tough Enough for Today's World.

FIELD REPLACEABLE UNIT DOCUMENTATION

SatelliteTM A20 Series

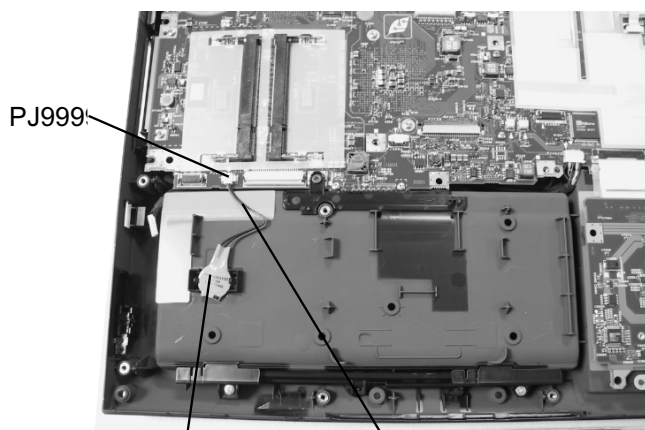
USB BOARD REMOVAL



M2.5x6 black flat head screws USB board

1. Disconnect the **USB board cable** from **PJ2029** on the USB board.
2. Remove **two M2.5x6 black flat head screws** securing the USB board.
3. Lift out the **USB board** and disconnect the USB harness.

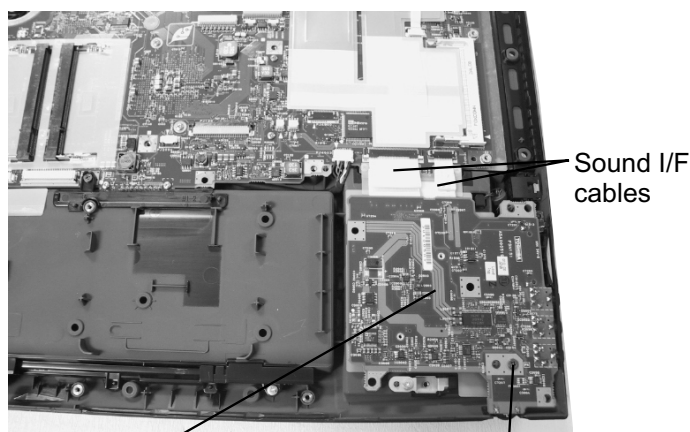
RTC BATTERY REMOVAL



RTC battery RTC cable

1. Disconnect the **RTC battery cable** from **PJ9999** on the system board.
3. Lift out the **RTC battery**.

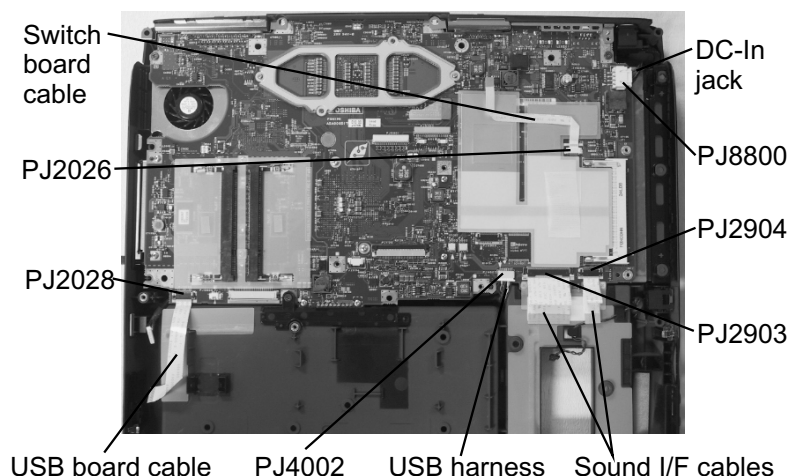
SOUND BOARD REMOVAL



Sound board M2.5x6 black flat head screw

1. Remove **one M2.5x6 black flat head screw** securing the sound board.
2. Gently lift up the **sound board** and disconnect the **two sound I/F cables** from PJ2901/2902 on the sound board.

SYSTEM BOARD REMOVAL



Switch board cable PJ2026 PJ2028 DC-In jack PJ8800 PJ2904 PJ2903 USB board cable PJ4002 USB harness Sound I/F cables

1. Disconnect the **DC IN jack** from **PJ8800** and the **switch board cable** from **PJ2026** on the system board.
2. Disconnect the **sound I/F cables** from **PJ2903/2904** and the **USB board cable** from **PJ2028** on the system board.

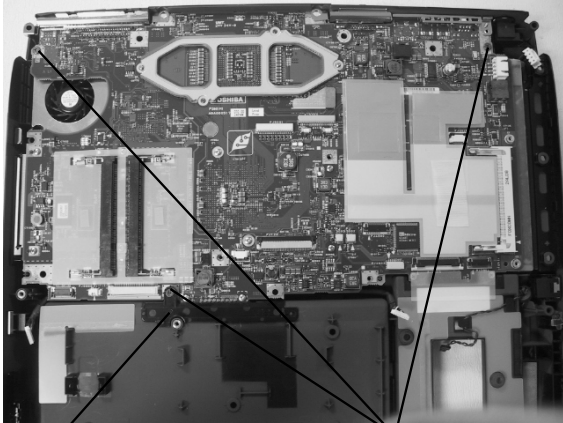
TOSHIBA

Tough Enough for Today's World.

FIELD REPLACEABLE UNIT DOCUMENTATION

SatelliteTM A20 Series

SYSTEM BOARD REMOVAL



Plastic brace

M2.5x6 black flat head screws

1. Remove **one M2.5x6 black flat head screw** securing the plastic brace and the system board.
2. Remove **two M2.5x6 black flat head screws** securing the system board.
3. Gently lift up the **system board** from the right hand side and lift it out of the bottom cover.

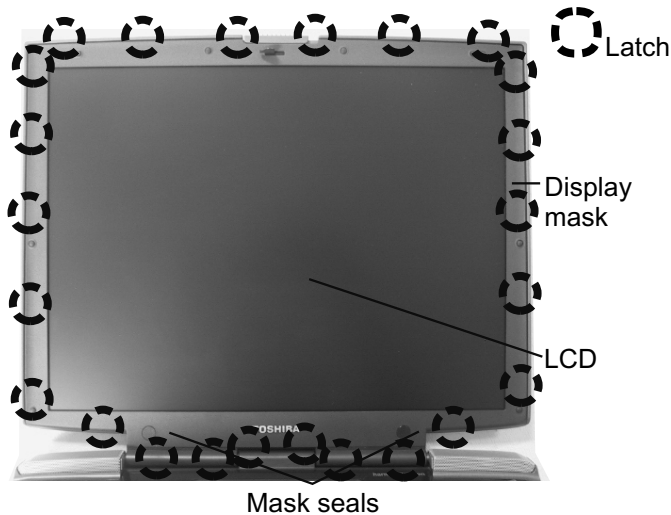
TOSHIBA

Tough Enough for Today's World.

FIELD REPLACEABLE UNIT DOCUMENTATION

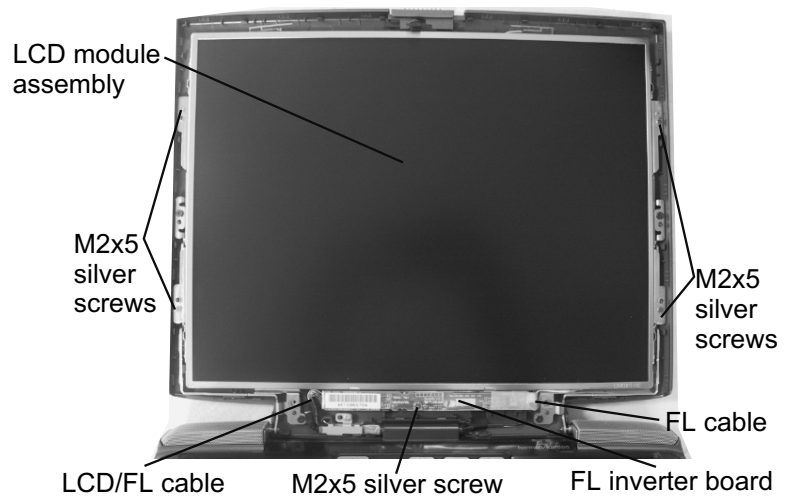
SatelliteTM A20 Series

15" DISPLAY MASK REMOVAL



1. Remove **two mask seals** at the bottom corners of the display assembly using a pair of fine-tipped tweezers.
2. Remove **two M2.5x6 black flat head screws** securing the display mask.
3. There are **23 latches** securing the **display mask**. Carefully insert your fingers between the mask and the LCD panel and pry open the latches starting from the **bottom six latches**, to the **five latches on the right and left sides**, ending with the **six top latches**.

FL INVERTER AND 15" LCD REMOVAL



1. Remove **one M2x5 silver screw** securing the FL inverter board.
2. Carefully lift up the **FL inverter board** and disconnect the **LCD/FL cable** from **CN1** and the **FL cable** from **CN2**.
3. Remove **four M2X5 silver flat head screws** securing the LCD module assembly.
4. Carefully rotate out the top of the **LCD module** enough to access the display cable
6. Peel off the tape securing the LCD/FL cable and disconnect the cable.
7. Remove **four M2x3 silver flat head screws** securing the left and right LCD brackets and separate the brackets

TOSHIBA

Tough Enough for Today's World.