

Supplement

301® III Sonata™/AVM Direct/Reflecting® Speaker System



Contents

| | |
|--|------------|
| Specifications | 3 |
| Technical Description | 3 |
| Cleaning the Sonata™ Speakers | 3 |
| Figure 1. Speaker Assembly | 4 |
| Figure 2. Crossover Schematic | 4 |
| Part List Notes | 5 |
| Part List | 6-7 |
| Figure 3. Packing Assembly | 8 |
| Packing Part List | 9 |

CAUTION: THE BOSE® 301® III SPEAKER SYSTEM CONTAIN NO USER-SERVICEABLE PARTS. TO PREVENT WARRANTY INFRACTIONS, REFER SERVICE TO WARRANTY SERVICE STATIONS OR FACTORY SERVICE.

PROPRIETARY INFORMATION

THIS DOCUMENT CONTAINS PROPRIETARY INFORMATION OF BOSE CORPORATION WHICH IS BEING FURNISHED ONLY FOR THE PURPOSE OF SERVICING THE IDENTIFIED BOSE PRODUCT BY AN AUTHORIZED BOSE SERVICE CENTER OR OWNER OF THE BOSE PRODUCT, AND SHALL NOT BE REPRODUCED OR USED FOR ANY OTHER PURPOSE.

SPECIFICATIONS

Transducers:

1-8" (20 cm) Woofer
2-3" (7.6 cm) Tweeters

Nominal Impedance:

8 Ohms

IEC Power Rating:

Min: 10 Watts per Channel
Max: 75 Watts per Channel

Cabinet:

High-gloss black finish
Black finish (AVM)

Speaker Dimensions:

10.5"H x 17"W x 9.5"D
(27H x 43W x 24D cm)

Shipping Weight:

44 lbs. (20 kg) per Packed Pair

TECHNICAL DESCRIPTION

The Sonata™ and AVM are similar to the Bose® 301® series III Direct/Reflecting® Speaker System with slight cosmetic differences. This supplement addresses those differences. Refer to the 301 series III service manual part number 149358 for Disassembly/Assembly, and Test procedures, along with this supplement to repair the Sonata and AVM speakers.

CLEANING THE SONATA SPEAKERS

Clean the surface of the speaker with a damp cloth. Other materials, such as paper towels, may be too abrasive. Use an ammonia-free window cleaner on a soft cloth to maintain the finish.

Also, do not use any solvents, chemicals, or cleaning solutions containing alcohol, ammonia, or abrasives.

The speaker grille panels require no special care. They should however, be vacuumed carefully to remove dust.

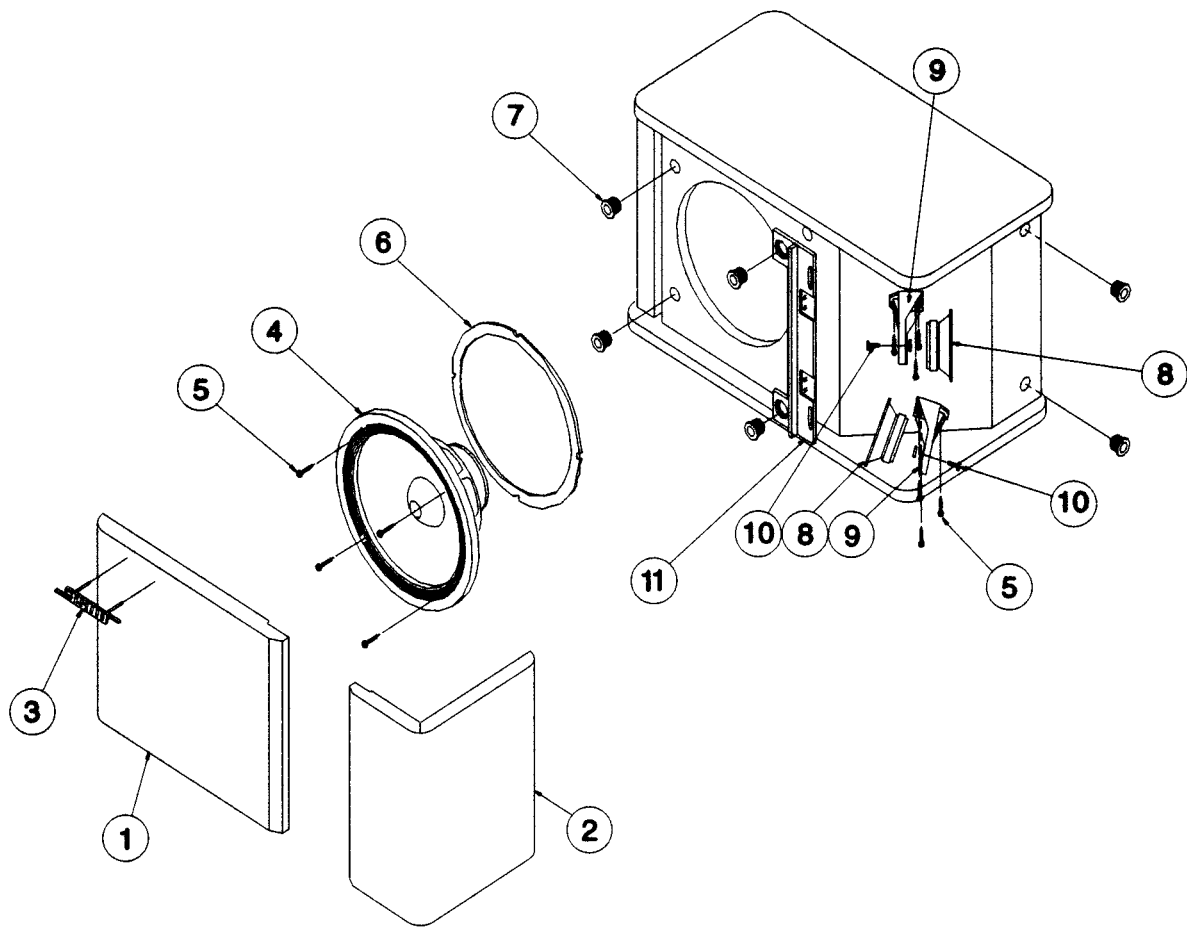


Figure 1. Speaker Assembly

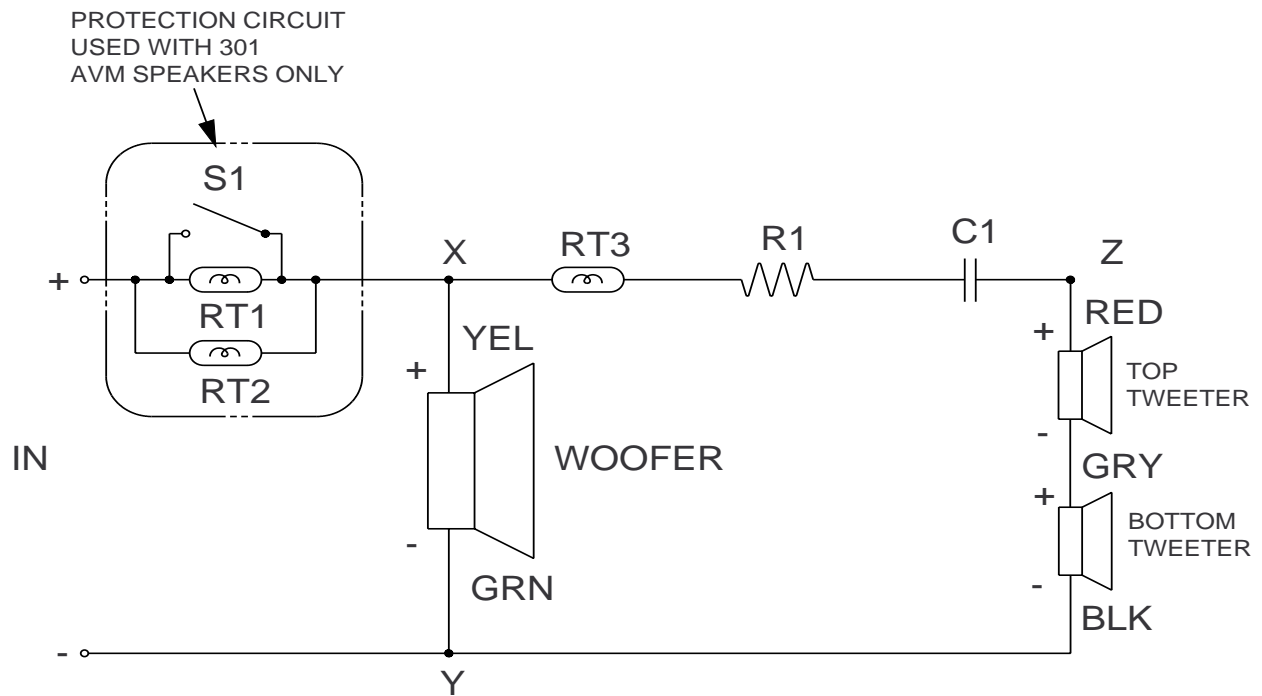


Figure 2. Crossover Schematic

PART LIST NOTES

1. C1 and R1 are paired. If you have a C1 of a particular value, you must use the corresponding value of R1 to achieve the correct frequency response.
2. Used on Sonata™ speakers only.
3. Used on AVM speakers only.
4. This item is not shown.
5. These items are included in the protection circuit part number 124683.
6. Use Tweeter 124618 if 130714 is not available.

PART LIST

Main Part List
(See Figure 1)

| Item Number | Description | Part Number | Qty. Per Speaker Assy. | Note |
|-------------|---|-------------|------------------------|------|
| 1 | Grille Assembly, 301 [®] AVM, Front, Black | 130862-3 | 1 | |
| 2 | Grille Assembly, 301 AVM, Side, Black | 130863-3 | 1 | |
| 3 | Nameplate, Logo, 2" | 180681 | 1 | 2 |
| 3 | Nameplate, Logo | 122812-3 | 1 | 3 |
| 4 | Woofers-8", Sonata™ | 181870-001 | 1 | 2 |
| | Woofers-8", shielded, AVM | 133781 | 1 | 3 |
| 5 | Screw, Machine, 8-32x1/2, Hex Washer, Hd. | 172672-12 | 10 | |
| 6 | Woofers Gasket | 120715 | 1 | |
| 7 | Grille Fastener | 117995 | 6 | |
| 8 | Tweeters, 3", Sonata | 130714 | 2 | 6 ** |
| | Tweeters, 3" shielded, AVM | 124618 | | 3 |
| 9 | Tweeters Mounting Bracket | 128501 | 2 | |
| 10 | Screw, Machine, 8-32x1/2, Hex Washer, Hd. | 121441-08 | 2 | |
| 11 | Grille Strap, Brushed Alum. | 133273-3 | 1 | 2 |
| | Grille Strap, AVM | 133273-1 | | 3 |
| --- | Terminal Cup Connector | 120711 | 1 | 4 |
| --- | Screw, 6-13x1/2, PAN, XREC/SQ | 172783-08 | 4 | 4 |
| --- | Bolt, Mounting, Flat, Hex | 143580 | 2 | 3 |

** Changed Item number 5, from note 2 to note 6. Refer to the notes on page 5

PART LIST

301® Sonata™ Crossover Part List
(See Figure 2)

| Symbol or Item Number | Description | Part Number | Qty. Per Speaker Assy. | Note |
|-----------------------------|---|----------------------|---------------------------------|------|
| C1 R1 | Capacitor-Film, 5%, 50V, 3.4uF Resistor-WW, 10%, 5W, 7.5Ω | 106825 125605-7R5 | 1 1 | 1 |
| C1 R1 | Capacitor-Film, 5%, 50V, 3.7uF Resistor-WW, 10%, 5W, 6.2Ω | 107055 125605-6R2 | 1 1 | 1 |
| C1 R1 | Capacitor-Film, 5%, 50V, 3.0uF Resistor-WW, 10%, 5W, 9.1Ω | 104130 125605-9R1 | 1 1 | 1 |
| C1 R1 | Capacitor-Film, 5%, 50V, 2.4uF Resistor-WW, 10%, 5W, 13.0Ω | 104131 125605-130 | 1 1 | 1 |
| RT1 | Mini-Lamp, 2.5A, 24VDC | 117805 | 1 | |

301 AVM Crossover Part List
(See Figure 2)

| Symbol or Item Number | Description | Part Number | Qty. Per Speaker Assy. | Note |
|-----------------------------|--|----------------------|---------------------------------|------|
| C1 R1 | Capacitor-Film, 5%, 50V, 4.0uF Resistor-WW, 10%, 5W, 5.1Ω | 108980 125605-5R1 | 1 1 | 1 |
| C1 R1 | Capacitor-Film, 5%, 50V, 4.0uF Resistor-WW, 10%, 5W, 3.0Ω | 108890 125605-3R0 | 1 1 | 1 |
| C1 R1 | Capacitor-Film, 5%, 50V, 3.7uF Resistor-WW, 10%, 5W, 6.8Ω | 107055 125605-6R8 | 1 1 | 1 |
| C1 R1 | Capacitor-Film, 5%, 50V, 3.4uF Resistor-WW, 10%, 5W, 8.2Ω | 106825 125605-8R2 | 1 1 | 1 |
| RT2, RT3 | Mini-Lamp, 2.5A, 24VDC | 117805 | 2 | |
| --- | Protection Circuit Assy | 124683 | 1 | |
| S-1 | Polyswitch, 50V, 31mm | 175233-2 | 1 | 5 |
| RT-1 | Mini-Lamp, 2.5A, 24VDC | 117805 | 1 | 5 |

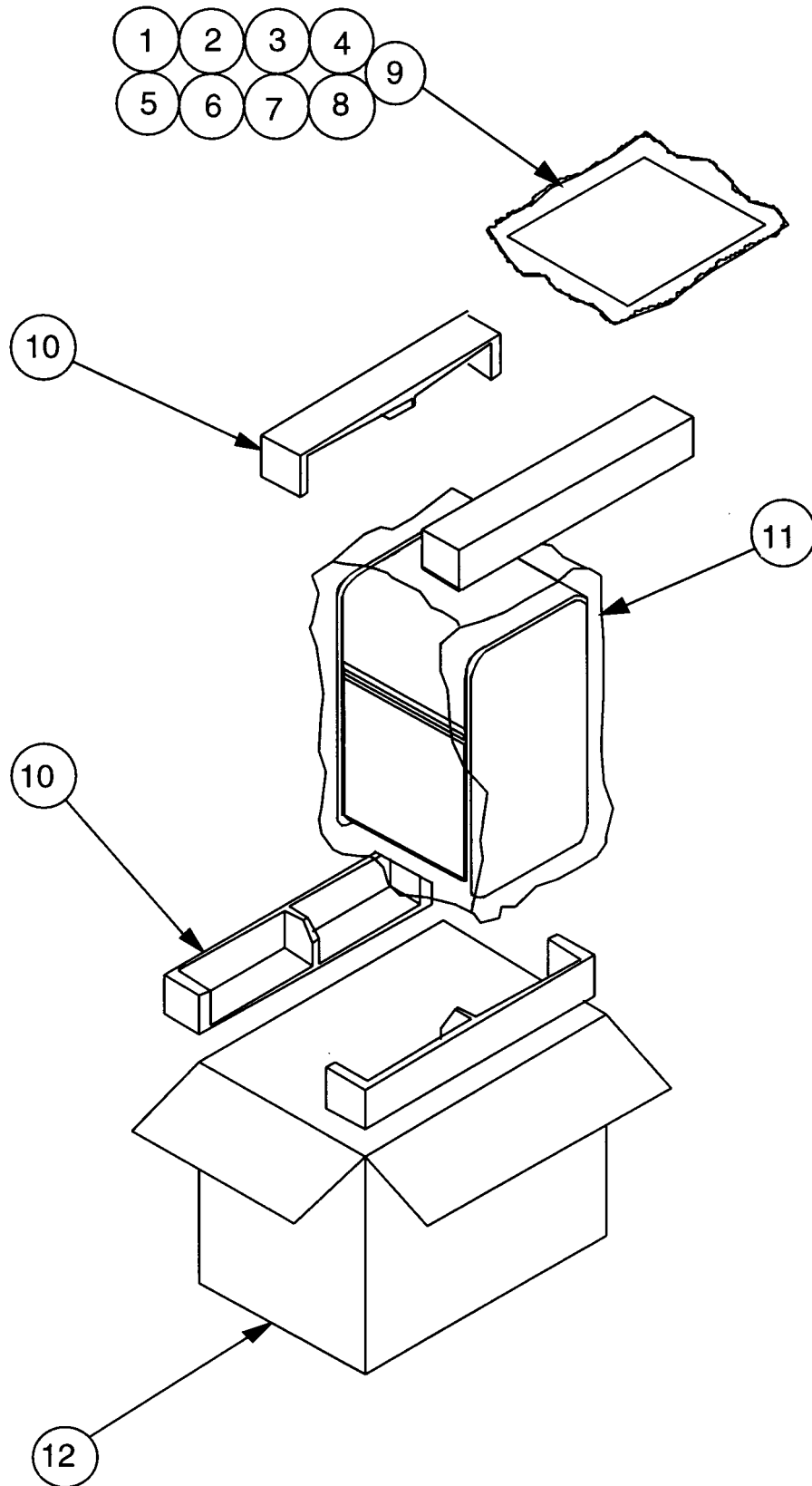


Figure 3. Packing Assembly

PACKING PART LIST

(See Figure 3)

| Item Number | Description | Part Number | Qty. Per Speaker Assy. | Note |
|-------------|--|-------------|------------------------|------|
| 1 | Owner's Manual | 180677 | 1 | |
| 2 | Polybag | 103351 | 1 | |
| 3 | All Products Brochure | 141478 | 1 | |
| 4 | Warranty Service List | 122766 | 1 | |
| 5 | Instruction Sheet, 301 Sonata | 180685 | 1 | |
| 6 | Information Card, Warranty, U.S. | 181357 | 1 | |
| 7 | Information Card, Warranty, Multi Language | 181460 | 1 | |
| 8 | Dec. of Conformity, 301 Sonata | 184050 | 1 | |
| 9 | Bumper, Foot, Adhesive Backed | 173012-04 | 8 | 2 |
| 10 | Packing, EPS | 129931 | 2 | |
| 11 | Cotton Bag | 180673 | 2 | 2 |
| | Polybag | 106595 | | 3 |
| 12 | Carton, RSC, 301 LE | 180665 | 1 | 2 |
| | Carton, AVM | 133698 | | 3 |

SPECIFICATIONS AND FEATURES SUBJECT TO CHANGE WITHOUT NOTICE

BOSE®
Better sound through research®

Bose Corporation
The Mountain
Framingham Massachusetts USA 01701

P/N 149358-S1 REV. 01 8/98 FOR TECHNICAL ASSISTANCE OR PART ORDERS, CALL 1-800-367-4008