

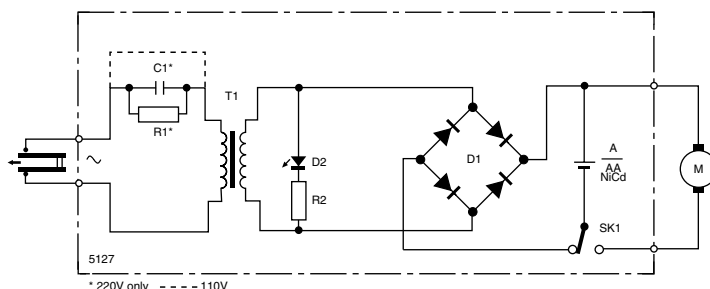


Domestic Appliances and Personal Care

Service Manual

HINTS FOR REPAIRS

- Remove the shaving unit, to prevent damages during repairs.
- Remove screw A.
- Put the shaver on the table and remove the cover (item 10) from the shaver.
- Unlock peg clamping 'Z' (2x) between frame (item 11) and hair chamber (item 6).
- When fitting the shaver it must be checked if wiring is correctly positioned.

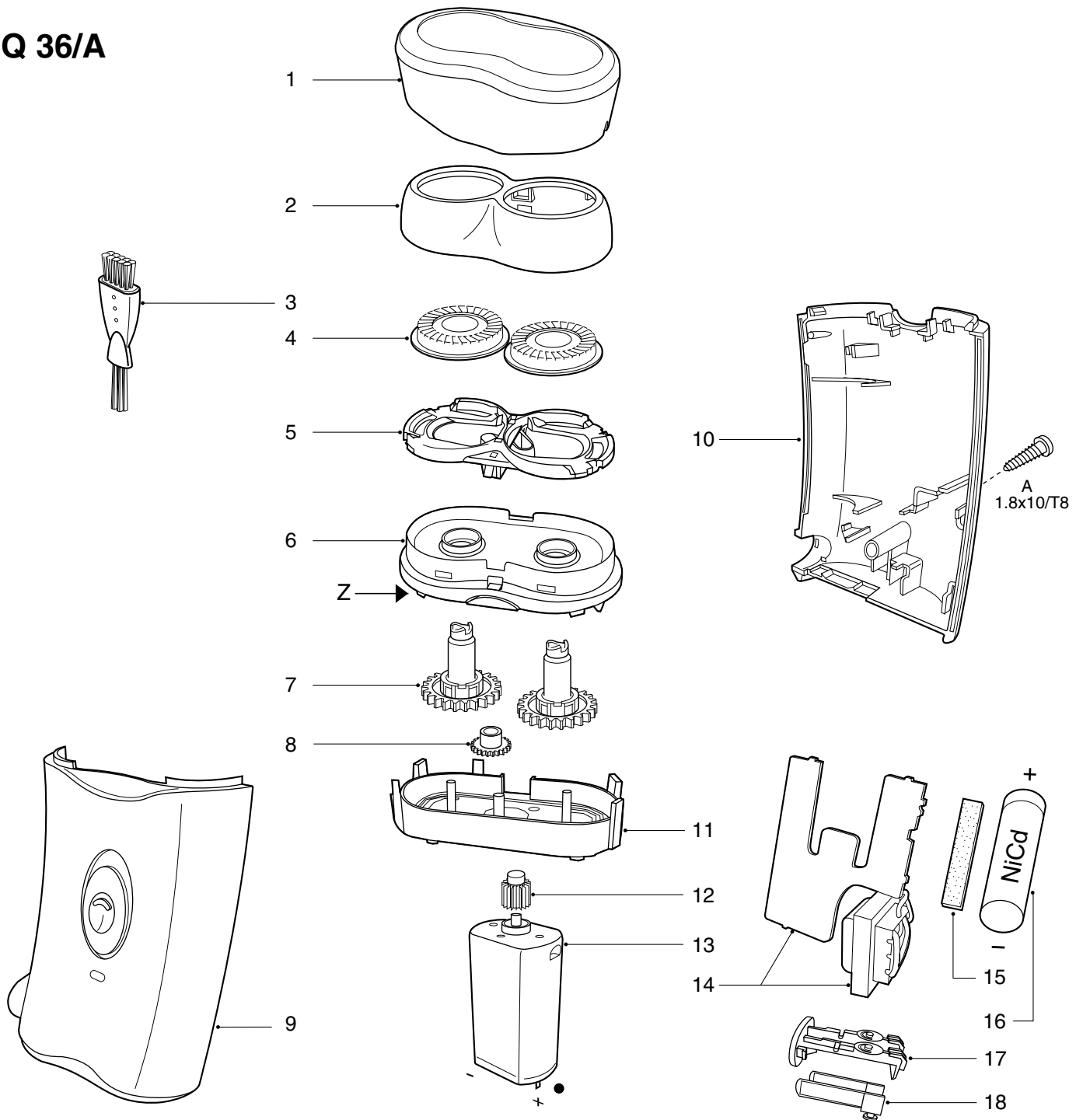


TECHNICAL DATA

Voltage	: 220-240V, 50/60 Hz via slide pins
Motor voltage	: 1.2 V _{DC}
Cell	: 1x Nicd AA
Cell capacity	: approx. 600 mAH
Charging system	: 50Hz transformer
Charge indicator	: green LED
Charging time	: approx. 8H
Charging current	: approx. 100 mA
Shaving heads	: 2x HQ3
Comfort control	: fixed setting

SAP Coding : HQ36

HQ 36/A



- | | | | | | |
|----|----------------|-------------------|----|----------------|-------------------------------------|
| 1 | 4222 036 02830 | Protection cap | 15 | 4822 466 91312 | Foam plate |
| 2 | 4222 036 01340 | Head housing | 16 | 4822 138 10633 | NiCd cell AA |
| 3 | 4222 036 02770 | Cleaning brush | 17 | 4222 036 03450 | Contact plate |
| 4 | 4822 690 30471 | HQ3 shaving head | 18 | 4222 036 01610 | Plug pins |
| 5 | 4222 036 02780 | Head holder | | A | 4822 502 30526 s.t. screw 1.8x10/T8 |
| 6 | 4222 036 02840 | Hairchamber | | | |
| 7 | 4222 036 02850 | Gearwheel | | | |
| 8 | 4222 036 02860 | Interm. gearwheel | | | |
| 9 | 4222 036 03410 | Housing | | | |
| 10 | 4222 036 03420 | Cover | | | |
| 11 | 4222 036 02880 | Frame | | | |
| 12 | 4222 036 02890 | Pinion | | | |
| 13 | 4222 036 03460 | Motor | | | |
| 14 | 4222 036 03430 | Power module 110V | | | |
| - | 4222 036 03440 | Power module 220V | | | |