



Philips Domestic Appliances and Personal Care

# Service Manual

SAP coding HQ 7885

**HINTS FOR REPAIR:**

- Remove the shaving unit, to prevent damages during repairing.
- Remove screws A1 (2x) Open trimmer for screw.
- Take cover from housing (trimmer must be closed).
- Remove brackets (14 and 21).
- The PCB-board can now be removed out of the housing.
- Remove the connecting strip from the motor by dis soldering.
- Remove screws B1 (2x) now the motor and hairchamber can be removed out of the housing.
- Detach the motor springs (17) from the gearwheel unit with a small screwdriver.

**ASSEMBLY:**

- Think by assembly on right placing of the trimmer

**GENERAL:**

- Rechargeble shaver
- Constant motor voltage
- Electronic push on/off
- Washable
- NiCd cell 2AA
- Charge time 1hr/30min
- Charging (mains) indication      LCD
- Battery low indication              LCD
- Battery full indication              LCD
- Minutes left                              LCD

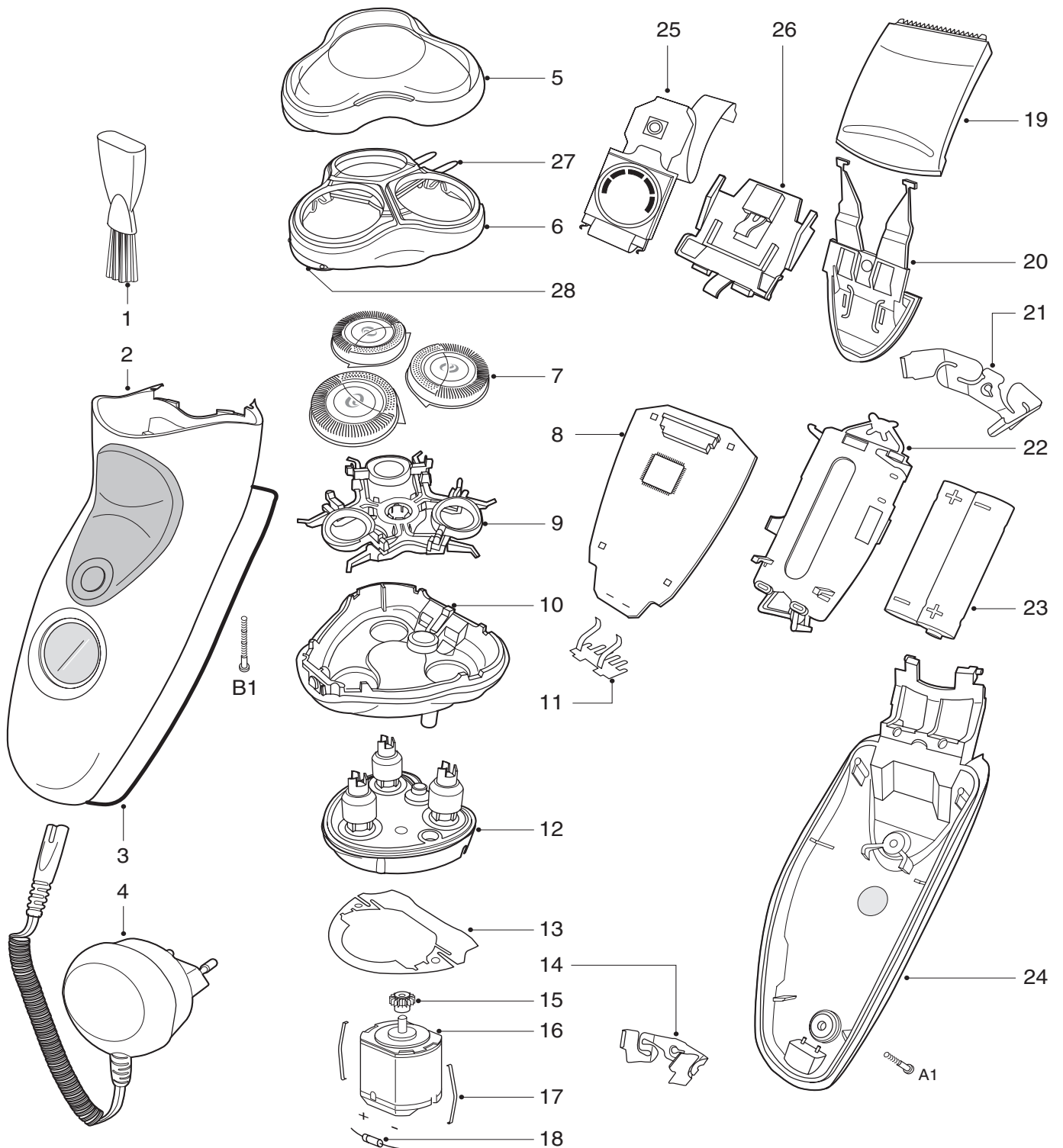
**TECHNICAL DATA:**

Voltage	: 100 - 240 Volt	50 - 60 Hz
Motor voltage	: 2,4 Volt	
Shaving heads	: HQ6 - 4822 690 10214	

This product meets the requirements regarding interference suppression on radio and TV.

After the product has been repaired, it should function properly and has to meet the safety requirements as officially laid down at this moment.

# HQ 7885



- |    |                |                   |    |                |                       |    |                |                      |
|----|----------------|-------------------|----|----------------|-----------------------|----|----------------|----------------------|
| 1  | 4822 479 30183 | cleaning brush    | 12 | 4822 522 10762 | driving unit          | 23 | 4222 036 06151 | 2-AA pack NiCd       |
| 2  | 4222 036 07070 | housing NOR       | 13 | 4822 466 12233 | sealing plate         | 24 | 4222 036 07090 | cover                |
| 3  | 4822 466 12232 | rubber seal       | 14 | 4222 036 06610 | bracket small         | 25 | 4822 135 00282 | LCD assy             |
| 4  | 4822 219 10722 | power plug NOR    | 15 | 4822 522 10763 | pinion                | 26 | 4822 256 10572 | LCD hold bracket     |
| 5  | 4222 036 06550 | protecting cap    | 16 | 4822 361 21783 | motor                 | 27 | 4222 036 02950 | spring hinge         |
| 6  | 4222 036 06560 | bracket           | 17 | 4822 492 71735 | motor clamp           | 28 | 4222 036 07330 | unlock knob          |
| 7  | 4822 690 10214 | HQ6 shaving heads | 18 | 4222 036 03200 | connecting strip assy | A1 | 4822 502 14657 | S.t. screw spec/T8   |
| 8  | 4822 214 13059 | power modul       | 19 | 4222 036 06630 | trimmer assy          | B  | 4822 502 14544 | S.t. screw 1,8x18/T8 |
| 9  | 4822 402 11319 | retaining bracket | 20 | 4222 036 06640 | trimmer slide assy    |    | 4222 036 06960 | pouch NOR            |
| 10 | 4222 036 06600 | hair chamber      | 21 | 4222 036 06650 | bracket large         |    |                |                      |
| 11 | 4822 265 11548 | connecting pins   | 22 | 4822 532 13149 | spacer AA             |    |                |                      |