



CDC-MP32

YU

SERVICE MANUAL

STEREO CAR CD RECEIVER

BASIC TAPE MECHANISM: CDC02AW1
BASIC CD MECHANISM: BZA-8 MP3NF

- Replace this Service manual with "Revision Publishing" when it is issued.

aiwa

S/M Code No. 09-014-443-9T1

SIMPLE

DATA

PARTS LIST

! = Δ SAFTY PARTS
 C = Components marked

All components used on this model at the production line are shown in this service manual.

However, please note that not all components will be available as spare parts for after-sales service.

Components marked S and O are designated as spare parts for service and will be stocked at the spare parts centers.

Components marked X and R are not designated as spare parts for after sales service, and will not be stocked at the spare parts centers.

K NO. = Only use japanese.

| ! C | UNIT NAME | REF NO. | PARTS CODE | K NO. | DESCRIPTION | SUFFIX | MODEL NAME |
|-----|------------|---------|----------------|-------|-----------------------------|--------|------------|
| O | ACCESSORY | | 87-B10-141-010 | 0E | NUT, 5 TYPE-2 | YUSTF | CDC-MP32 |
| O | ACCESSORY | | 87-B10-143-010 | 0E | UT1+5-15 W/O SLOT | YUSTF | CDC-MP32 |
| O | ACCESSORY | | 87-B10-144-010 | 0E | W, 5.2-10-0.5 | YUSTF | CDC-MP32 |
| O | ACCESSORY | | 87-B10-145-010 | 0E | W-SPR, 5.3-8.5-1.5 | YUSTF | CDC-MP32 |
| X | ACCESSORY | | 87-B40-178-010 | 0E | BAG, PV 0.04-100-250 | YUSTF | CDC-MP32 |
| X | ACCESSORY | | 87-B40-179-010 | 0E | BAG, PV 0.04-50-100 | YUSTF | CDC-MP32 |
| O | ACCESSORY | | 8Z-KC1-231-110 | 1C | HLD, HALF -C | YUSTF | CDC-MP32 |
| O | ACCESSORY | | 8Z-KC1-232-010 | 0E | KEY, REMOVE -C | YUSTF | CDC-MP32 |
| O | ACCESSORY | | 8Z-KC1-235-010 | 0E | HLD, REAR MTG | YUSTF | CDC-MP32 |
| O | ACCESSORY | | 8Z-KC1-244-010 | 0E | S-SCREW, 5*6 TH+ TAPPING ST | YUSTF | CDC-MP32 |
| O | ACCESSORY | | 8Z-KC1-250-010 | 0E | S-SCREW, HEXAGON | YUSTF | CDC-MP32 |
| O | ACCESSORY | | 8Z-KT1-616-010 | 1F | CONN ASSY, 16P B52 | YUSTF | CDC-MP32 |
| O | APPEARANCE | | 8B-KC6-001-010 | 1B | WINDOW, LCD MP32 YU | YUSTF | CDC-MP32 |
| O | APPEARANCE | | 8B-KC7-025-010 | 1A | PANEL, BOARD | YUSTF | CDC-MP32 |
| O | APPEARANCE | * | 8B-KC6-002-010 | 1E | CABL, FRONT AL MP3 | YUSTF | CDC-MP32 |
| O | APPEARANCE | * | 8B-KC7-001-010 | 1A | CABL, FRONT HIGH | YUSTF | CDC-MP32 |
| O | APPEARANCE | * | 8B-KC7-002-010 | 1B | CABL, REAR | YUSTF | CDC-MP32 |
| O | APPEARANCE | * | 8B-KC7-008-010 | 1A | CABL, BTN PANEL B | YUSTF | CDC-MP32 |
| O | APPEARANCE | * | 8B-KC7-015-010 | 0E | LENS, BER | YUSTF | CDC-MP32 |
| O | APPEARANCE | * | 8B-KC7-021-010 | 1A | CABL, BASE MAIN | YUSTF | CDC-MP32 |
| O | APPEARANCE | * | 8B-KC7-022-010 | 0E | LENS, CD | YUSTF | CDC-MP32 |
| O | APPEARANCE | * | 8B-KC7-023-010 | 1B | CABL, BASE AROUND | YUSTF | CDC-MP32 |
| O | APPEARANCE | * | 8B-KC7-024-010 | 1A | CABL, TRIM | YUSTF | CDC-MP32 |
| O | CD | | 88-KC4-641-010 | 1A | FF-CABLE, 20P 1.0 90MM | YUSTF | CDC-MP32 |
| O | CD | | 88-ZG5-317-010 | 0E | S-SCREW, 8ZG5S+2-4 W/O | YUSTF | CDC-MP32 |
| X | CD | | 89-920-030-110 | 0E | WIRE, UDO-3-3 | YUSTF | CDC-MP32 |
| O | CD | | 8A-KC7-255-010 | 0E | SPR-C, WIRE | YUSTF | CDC-MP32 |
| X | CD | | A8-BZA-890-040 | -- | BZA-8 MP3NF | YUSTF | CDC-MP32 |
| X | CD | | M8-AZK-E90-070 | 3M | CDC02AW1 | YUSTF | CDC-MP32 |
| O | CD | C 0402 | 87-A10-369-080 | 0E | C-CAP, S 0.47-16 K B | YUSTF | CDC-MP32 |
| O | CD | C 0403 | 87-A10-369-080 | 0E | C-CAP, S 0.47-16 K B | YUSTF | CDC-MP32 |
| O | CD | C 0409 | 87-010-494-040 | 0E | CAP, E 1-50 M 5L SRE | YUSTF | CDC-MP32 |
| O | CD | C 0410 | 87-010-494-040 | 0E | CAP, E 1-50 M 5L SRE | YUSTF | CDC-MP32 |
| X | CD | R 0435 | 88-108-000-080 | 0E | C-JUMPER, U | YUSTF | CDC-MP32 |
| X | CD | R 0436 | 88-108-000-080 | 0E | C-JUMPER, U | YUSTF | CDC-MP32 |
| O | CONNECTION | | 8B-KC1-603-010 | 0E | F-CABLE, 2P (PWB LED) | YUSTF | CDC-MP32 |
| O | CONNECTION | * | 8B-KC7-617-010 | 0E | CONN ASSY, 6P EMP | YUSTF | CDC-MP32 |
| O | CONNECTION | * | 8B-KC7-618-010 | 0E | F-CABLE, 2P MOT | YUSTF | CDC-MP32 |
| O | CONNECTION | ANT0101 | 8Z-KT1-614-010 | 1A | ANT, AW-002 | YUSTF | CDC-MP32 |
| O | CONNECTION | CON0401 | 87-A61-219-010 | 1A | CONN, 20P H 52089-2020 | YUSTF | CDC-MP32 |
| O | CONNECTION | CON0402 | 87-A61-584-010 | 1B | CONN, 24P H 52089-2420 | YUSTF | CDC-MP32 |
| O | CONNECTION | CON0403 | 87-A61-583-010 | 1A | CONN, 16P H 52089-1620 | YUSTF | CDC-MP32 |
| O | CONNECTION | CON0701 | 8Z-KT1-611-010 | 1B | CONN, 16P CAM-B51 | YUSTF | CDC-MP32 |
| O | CONNECTION | CON0751 | 87-A60-670-010 | 0E | CONN, 6P H 2MM JMT | YUSTF | CDC-MP32 |
| O | CONNECTION | J 0401 | 87-A61-224-110 | 1A | JACK, PIN 4P XR-401 | YUSTF | CDC-MP32 |
| O | CONNECTION | J 0402 | 8A-KC7-620-010 | 1B | JACK, DIN 13 P SKDS1302 | YUSTF | CDC-MP32 |
| O | E-VOL | C 0301 | 87-010-497-040 | 0E | CAP, E 4.7-35 M 5L SRE | YUSTF | CDC-MP32 |
| O | E-VOL | C 0302 | 87-010-497-040 | 0E | CAP, E 4.7-35 M 5L SRE | YUSTF | CDC-MP32 |
| O | E-VOL | C 0303 | 87-010-494-040 | 0E | CAP, E 1-50 M 5L SRE | YUSTF | CDC-MP32 |
| O | E-VOL | C 0304 | 87-010-494-040 | 0E | CAP, E 1-50 M 5L SRE | YUSTF | CDC-MP32 |
| O | E-VOL | C 0305 | 87-012-280-080 | 0E | C-CAP, U 3300P-50 K B | YUSTF | CDC-MP32 |
| O | E-VOL | C 0306 | 87-012-280-080 | 0E | C-CAP, U 3300P-50 K B | YUSTF | CDC-MP32 |
| O | E-VOL | C 0307 | 87-010-787-080 | 0E | C-CAP, U 0.022-25 K B | YUSTF | CDC-MP32 |
| O | E-VOL | C 0308 | 87-010-787-080 | 0E | C-CAP, U 0.022-25 K B | YUSTF | CDC-MP32 |
| O | E-VOL | C 0309 | 87-010-494-040 | 0E | CAP, E 1-50 M 5L SRE | YUSTF | CDC-MP32 |
| O | E-VOL | C 0310 | 87-010-494-040 | 0E | CAP, E 1-50 M 5L SRE | YUSTF | CDC-MP32 |
| O | E-VOL | C 0311 | 87-A12-308-080 | 0E | C-CAP, S 0.15-25 K B | YUSTF | CDC-MP32 |
| O | E-VOL | C 0312 | 87-A12-308-080 | 0E | C-CAP, S 0.15-25 K B | YUSTF | CDC-MP32 |
| O | E-VOL | C 0313 | 87-A12-308-080 | 0E | C-CAP, S 0.15-25 K B | YUSTF | CDC-MP32 |
| O | E-VOL | C 0314 | 87-A12-308-080 | 0E | C-CAP, S 0.15-25 K B | YUSTF | CDC-MP32 |
| O | E-VOL | C 0315 | 87-010-494-040 | 0E | CAP, E 1-50 M 5L SRE | YUSTF | CDC-MP32 |
| O | E-VOL | C 0316 | 87-010-494-040 | 0E | CAP, E 1-50 M 5L SRE | YUSTF | CDC-MP32 |
| O | E-VOL | C 0317 | 87-010-831-080 | 0E | C-CAP, U 0.1-16 Z F | YUSTF | CDC-MP32 |
| O | E-VOL | C 0318 | 87-010-498-040 | 0E | CAP, E 10-16 M 5L SRE | YUSTF | CDC-MP32 |
| O | E-VOL | C 0321 | 87-010-555-040 | 0E | CAP, E 100-10 M 5L SRE | YUSTF | CDC-MP32 |
| O | E-VOL | C 0322 | 87-010-787-080 | 0E | C-CAP, U 0.022-25 K B | YUSTF | CDC-MP32 |
| O | E-VOL | C 0323 | 87-010-498-040 | 0E | CAP, E 10-16 M 5L SRE | YUSTF | CDC-MP32 |
| O | E-VOL | C 0324 | 87-010-498-040 | 0E | CAP, E 10-16 M 5L SRE | YUSTF | CDC-MP32 |
| O | E-VOL | C 0325 | 87-010-498-040 | 0E | CAP, E 10-16 M 5L SRE | YUSTF | CDC-MP32 |
| O | E-VOL | C 0326 | 87-010-498-040 | 0E | CAP, E 10-16 M 5L SRE | YUSTF | CDC-MP32 |

PARTS LIST

! = Δ SAFTY PARTS
 C = Components marked

All components used on this model at the production line are shown in this service manual.

However, please note that not all components will be available as spare parts for after-sales service.

Components marked S and O are designated as spare parts for service and will be stocked at the spare parts centers.

Components marked X and R are not designated as spare parts for after sales service, and will not be stocked at the spare parts centers.

K NO. = Only use japanese.

| ! C | UNIT NAME | REF NO. | PARTS CODE | K NO. | DESCRIPTION | SUFFIX | MODEL NAME | |
|-----|-----------|---------|------------|----------------|-------------|---------------------------|------------|----------|
| O | E-VOL | C | 0341 | 87-010-491-040 | 0E | CAP,E 0.22-50 M 5L SRE | YUSTF | CDC-MP32 |
| O | E-VOL | C | 0342 | 87-010-491-040 | 0E | CAP,E 0.22-50 M 5L SRE | YUSTF | CDC-MP32 |
| O | E-VOL | C | 0401 | 87-010-498-040 | 0E | CAP,E 10-16 M 5L SRE | YUSTF | CDC-MP32 |
| O | E-VOL | C | 0423 | 87-010-497-040 | 0E | CAP,E 4.7-35 M 5L SRE | YUSTF | CDC-MP32 |
| O | E-VOL | C | 0424 | 87-010-497-040 | 0E | CAP,E 4.7-35 M 5L SRE | YUSTF | CDC-MP32 |
| O | E-VOL | C | 0425 | 87-010-497-040 | 0E | CAP,E 4.7-35 M 5L SRE | YUSTF | CDC-MP32 |
| O | E-VOL | C | 0426 | 87-010-497-040 | 0E | CAP,E 4.7-35 M 5L SRE | YUSTF | CDC-MP32 |
| O | E-VOL | C | 0427 | 87-012-270-080 | 0E | C-CAP,U 470P-50 K B | YUSTF | CDC-MP32 |
| O | E-VOL | C | 0428 | 87-012-270-080 | 0E | C-CAP,U 470P-50 K B | YUSTF | CDC-MP32 |
| O | E-VOL | C | 0429 | 87-012-270-080 | 0E | C-CAP,U 470P-50 K B | YUSTF | CDC-MP32 |
| O | E-VOL | C | 0430 | 87-012-270-080 | 0E | C-CAP,U 470P-50 K B | YUSTF | CDC-MP32 |
| O | E-VOL | C | 0451 | 87-012-358-080 | 0E | C-CAP,S 0.47-10 Z F CM/CB | YUSTF | CDC-MP32 |
| O | E-VOL | C | 0452 | 87-012-358-080 | 0E | C-CAP,S 0.47-10 Z F CM/CB | YUSTF | CDC-MP32 |
| O | E-VOL | C | 0453 | 87-010-831-080 | 0E | C-CAP,U 0.1-16 Z F | YUSTF | CDC-MP32 |
| O | E-VOL | C | 0454 | 87-012-286-080 | 0E | C-CAP,U 0.01-25 K B | YUSTF | CDC-MP32 |
| S | E-VOL | D | 0301 | 87-020-331-040 | 0E | C-DIODE,DAN202K | YUSTF | CDC-MP32 |
| S | E-VOL | D | 0401 | 87-020-331-040 | 0E | C-DIODE,DAN202K | YUSTF | CDC-MP32 |
| S | E-VOL | D | 0451 | 87-A40-250-040 | 0E | C-DIODE,DAN217 | YUSTF | CDC-MP32 |
| S | E-VOL | IC | 0301 | 8Z-KT1-622-010 | 2A | C-IC,LC75374E | YUSTF | CDC-MP32 |
| X | E-VOL | JR | 0007 | 88-108-000-080 | 0E | C-JUMPER,U | YUSTF | CDC-MP32 |
| X | E-VOL | JR | 0008 | 88-108-000-080 | 0E | C-JUMPER,U | YUSTF | CDC-MP32 |
| X | E-VOL | JR | 0009 | 88-108-000-080 | 0E | C-JUMPER,U | YUSTF | CDC-MP32 |
| X | E-VOL | JR | 0010 | 88-108-000-080 | 0E | C-JUMPER,U | YUSTF | CDC-MP32 |
| O | E-VOL | L | 0401 | 87-003-102-080 | 0E | COIL,10UH J LAL02 | YUSTF | CDC-MP32 |
| S | E-VOL | Q | 0341 | 87-A30-287-040 | 0E | C-TR,DTC114TKA | YUSTF | CDC-MP32 |
| S | E-VOL | Q | 0342 | 87-A30-287-040 | 0E | C-TR,DTC114TKA | YUSTF | CDC-MP32 |
| S | E-VOL | Q | 0401 | 87-A30-283-040 | 0E | C-TR,DTA114YKA | YUSTF | CDC-MP32 |
| S | E-VOL | Q | 0402 | 87-A30-287-040 | 0E | C-TR,DTC114TKA | YUSTF | CDC-MP32 |
| S | E-VOL | Q | 0403 | 87-A30-287-040 | 0E | C-TR,DTC114TKA | YUSTF | CDC-MP32 |
| S | E-VOL | Q | 0404 | 87-A30-287-040 | 0E | C-TR,DTC114TKA | YUSTF | CDC-MP32 |
| S | E-VOL | Q | 0405 | 87-A30-287-040 | 0E | C-TR,DTC114TKA | YUSTF | CDC-MP32 |
| S | E-VOL | Q | 0406 | 87-A30-287-040 | 0E | C-TR,DTC114TKA | YUSTF | CDC-MP32 |
| S | E-VOL | Q | 0451 | 89-324-122-040 | 0E | C-TR,2SC2412KR | YUSTF | CDC-MP32 |
| X | E-VOL | R | 0301 | 88-108-332-080 | 0E | C-RES,U 3.3K-1/16W J | YUSTF | CDC-MP32 |
| X | E-VOL | R | 0302 | 88-108-332-080 | 0E | C-RES,U 3.3K-1/16W J | YUSTF | CDC-MP32 |
| X | E-VOL | R | 0303 | 88-108-332-080 | 0E | C-RES,U 3.3K-1/16W J | YUSTF | CDC-MP32 |
| X | E-VOL | R | 0304 | 88-108-332-080 | 0E | C-RES,U 3.3K-1/16W J | YUSTF | CDC-MP32 |
| X | E-VOL | R | 0305 | 88-108-102-080 | 0E | C-RES,U 1K-1/16W J | YUSTF | CDC-MP32 |
| X | E-VOL | R | 0306 | 88-108-102-080 | 0E | C-RES,U 1K-1/16W J | YUSTF | CDC-MP32 |
| X | E-VOL | R | 0307 | 88-108-102-080 | 0E | C-RES,U 1K-1/16W J | YUSTF | CDC-MP32 |
| X | E-VOL | R | 0308 | 88-108-102-080 | 0E | C-RES,U 1K-1/16W J | YUSTF | CDC-MP32 |
| X | E-VOL | R | 0311 | 88-108-223-080 | 0E | C-RES,U 22K-1/16W J | YUSTF | CDC-MP32 |
| X | E-VOL | R | 0312 | 88-108-223-080 | 0E | C-RES,U 22K-1/16W J | YUSTF | CDC-MP32 |
| X | E-VOL | R | 0313 | 88-108-223-080 | 0E | C-RES,U 22K-1/16W J | YUSTF | CDC-MP32 |
| X | E-VOL | R | 0314 | 88-108-223-080 | 0E | C-RES,U 22K-1/16W J | YUSTF | CDC-MP32 |
| X | E-VOL | R | 0315 | 88-108-102-080 | 0E | C-RES,U 1K-1/16W J | YUSTF | CDC-MP32 |
| X | E-VOL | R | 0316 | 88-108-102-080 | 0E | C-RES,U 1K-1/16W J | YUSTF | CDC-MP32 |
| X | E-VOL | R | 0317 | 88-108-102-080 | 0E | C-RES,U 1K-1/16W J | YUSTF | CDC-MP32 |
| X | E-VOL | R | 0318 | 88-108-102-080 | 0E | C-RES,U 1K-1/16W J | YUSTF | CDC-MP32 |
| X | E-VOL | R | 0321 | 88-108-102-080 | 0E | C-RES,U 1K-1/16W J | YUSTF | CDC-MP32 |
| X | E-VOL | R | 0322 | 88-108-102-080 | 0E | C-RES,U 1K-1/16W J | YUSTF | CDC-MP32 |
| X | E-VOL | R | 0323 | 88-108-102-080 | 0E | C-RES,U 1K-1/16W J | YUSTF | CDC-MP32 |
| X | E-VOL | R | 0341 | 88-108-335-080 | 0E | C-RES,U 3.3M-1/16W J | YUSTF | CDC-MP32 |
| X | E-VOL | R | 0342 | 88-108-335-080 | 0E | C-RES,U 3.3M-1/16W J | YUSTF | CDC-MP32 |
| X | E-VOL | R | 0343 | 88-108-104-080 | 0E | C-RES,U 100K-1/16W J | YUSTF | CDC-MP32 |
| X | E-VOL | R | 0344 | 88-108-104-080 | 0E | C-RES,U 100K-1/16W J | YUSTF | CDC-MP32 |
| X | E-VOL | R | 0345 | 88-108-104-080 | 0E | C-RES,U 100K-1/16W J | YUSTF | CDC-MP32 |
| X | E-VOL | R | 0346 | 88-108-104-080 | 0E | C-RES,U 100K-1/16W J | YUSTF | CDC-MP32 |
| X | E-VOL | R | 0401 | 88-108-562-080 | 0E | C-RES,U 5.6K-1/16W J | YUSTF | CDC-MP32 |
| X | E-VOL | R | 0402 | 88-108-222-080 | 0E | C-RES,U 2.2K-1/16W J | YUSTF | CDC-MP32 |
| X | E-VOL | R | 0437 | 88-108-102-080 | 0E | C-RES,U 1K-1/16W J | YUSTF | CDC-MP32 |
| X | E-VOL | R | 0438 | 88-108-102-080 | 0E | C-RES,U 1K-1/16W J | YUSTF | CDC-MP32 |
| X | E-VOL | R | 0439 | 88-108-102-080 | 0E | C-RES,U 1K-1/16W J | YUSTF | CDC-MP32 |
| X | E-VOL | R | 0440 | 88-108-102-080 | 0E | C-RES,U 1K-1/16W J | YUSTF | CDC-MP32 |
| X | E-VOL | R | 0451 | 88-108-104-080 | 0E | C-RES,U 100K-1/16W J | YUSTF | CDC-MP32 |
| X | E-VOL | R | 0452 | 88-108-104-080 | 0E | C-RES,U 100K-1/16W J | YUSTF | CDC-MP32 |
| X | E-VOL | R | 0453 | 88-108-105-080 | 0E | C-RES,U 1M-1/16W J | YUSTF | CDC-MP32 |
| X | E-VOL | R | 0454 | 88-108-472-080 | 0E | C-RES,U 4.7K-1/16W J | YUSTF | CDC-MP32 |
| X | E-VOL | R | 0455 | 88-108-103-080 | 0E | C-RES,U 10K-1/16W J | YUSTF | CDC-MP32 |
| X | E-VOL | R | 0456 | 88-108-102-080 | 0E | C-RES,U 1K-1/16W J | YUSTF | CDC-MP32 |

PARTS LIST

! = Δ SAFTY PARTS
 C = Components marked

All components used on this model at the production line are shown in this service manual.

However, please note that not all components will be available as spare parts for after-sales service.

Components marked S and O are designated as spare parts for service and will be stocked at the spare parts centers.

Components marked X and R are not designated as spare parts for after sales service, and will not be stocked at the spare parts centers.

K NO. = Only use japanese.

| ! C | UNIT NAME | REF NO. | PARTS CODE | K NO. | DESCRIPTION | SUFFIX | MODEL NAME |
|-----|------------|---------|----------------|-------|-------------------------|--------|------------|
| X | E-VOL | R 0457 | 88-108-105-080 | 0E | C-RES,U 1M-1/16W J | YUSTF | CDC-MP32 |
| O | ELECTRICAL | C 0602 | 87-010-831-080 | 0E | C-CAP,U 0.1-16 Z F | YUSTF | CDC-MP32 |
| O | ELECTRICAL | C 0603 | 87-010-831-080 | 0E | C-CAP,U 0.1-16 Z F | YUSTF | CDC-MP32 |
| O | ELECTRICAL | C 0604 | 87-A10-504-080 | 0E | C-CAP,U 0.047-16 K B | YUSTF | CDC-MP32 |
| O | ELECTRICAL | C 0605 | 87-012-199-080 | 0E | C-CAP,U 220P-50 J CH | YUSTF | CDC-MP32 |
| O | ELECTRICAL | C 0606 | 87-A10-504-080 | 0E | C-CAP,U 0.047-16 K B | YUSTF | CDC-MP32 |
| O | ELECTRICAL | C 0607 | 87-A10-504-080 | 0E | C-CAP,U 0.047-16 K B | YUSTF | CDC-MP32 |
| O | ELECTRICAL | C 0608 | 87-A10-504-080 | 0E | C-CAP,U 0.047-16 K B | YUSTF | CDC-MP32 |
| O | ELECTRICAL | C 0609 | 87-A10-504-080 | 0E | C-CAP,U 0.047-16 K B | YUSTF | CDC-MP32 |
| O | ELECTRICAL | C 0610 | 87-010-805-080 | 0E | C-CAP,S 1-16 Z F | YUSTF | CDC-MP32 |
| O | ELECTRICAL | C 0611 | 87-010-831-080 | 0E | C-CAP,U 0.1-16 Z F | YUSTF | CDC-MP32 |
| O | ELECTRICAL | C 0612 | 87-010-831-080 | 0E | C-CAP,U 0.1-16 Z F | YUSTF | CDC-MP32 |
| O | ELECTRICAL | C 0613 | 87-012-286-080 | 0E | C-CAP,U 0.01-25 K B | YUSTF | CDC-MP32 |
| O | ELECTRICAL | C 0621 | 87-010-831-080 | 0E | C-CAP,U 0.1-16 Z F | YUSTF | CDC-MP32 |
| O | ELECTRICAL | CON0601 | 87-A61-585-080 | 1B | C-CONN,24P H 54548-2490 | YUSTF | CDC-MP32 |
| O | ELECTRICAL | CON0603 | 87-A61-586-080 | 1A | C-CONN,16P V FLZT-SM1 | YUSTF | CDC-MP32 |
| S | ELECTRICAL | D 0601 | 87-A40-250-040 | 0E | C-DIODE,DAN217 | YUSTF | CDC-MP32 |
| S | ELECTRICAL | IC 0601 | 87-A21-532-030 | 2M | C-IC,LC75817W-8720 | YUSTF | CDC-MP32 |
| X | ELECTRICAL | JR 0601 | 88-108-000-080 | 0E | C-JUMPER,U | YUSTF | CDC-MP32 |
| X | ELECTRICAL | JR 0602 | 88-108-000-080 | 0E | C-JUMPER,U | YUSTF | CDC-MP32 |
| O | ELECTRICAL | L 0601 | 87-005-906-080 | 0E | C-COIL,S 10UH K LK2125 | YUSTF | CDC-MP32 |
| O | ELECTRICAL | L 0602 | 87-005-906-080 | 0E | C-COIL,S 10UH K LK2125 | YUSTF | CDC-MP32 |
| O | ELECTRICAL | L 0603 | 87-005-906-080 | 0E | C-COIL,S 10UH K LK2125 | YUSTF | CDC-MP32 |
| O | ELECTRICAL | LED0601 | 87-A91-355-040 | 0E | C-LED,BR1112H-TR-RED | YUSTF | CDC-MP32 |
| O | ELECTRICAL | LED0602 | 87-A91-355-040 | 0E | C-LED,BR1112H-TR-RED | YUSTF | CDC-MP32 |
| O | ELECTRICAL | LED0603 | 87-A91-355-040 | 0E | C-LED,BR1112H-TR-RED | YUSTF | CDC-MP32 |
| O | ELECTRICAL | LED0604 | 87-A91-355-040 | 0E | C-LED,BR1112H-TR-RED | YUSTF | CDC-MP32 |
| O | ELECTRICAL | LED0611 | 87-A91-355-040 | 0E | C-LED,BR1112H-TR-RED | YUSTF | CDC-MP32 |
| O | ELECTRICAL | LED0612 | 87-A91-355-040 | 0E | C-LED,BR1112H-TR-RED | YUSTF | CDC-MP32 |
| O | ELECTRICAL | LED0613 | 87-A91-355-040 | 0E | C-LED,BR1112H-TR-RED | YUSTF | CDC-MP32 |
| O | ELECTRICAL | LED0614 | 87-A91-355-040 | 0E | C-LED,BR1112H-TR-RED | YUSTF | CDC-MP32 |
| O | ELECTRICAL | LED0615 | 87-A91-355-040 | 0E | C-LED,BR1112H-TR-RED | YUSTF | CDC-MP32 |
| O | ELECTRICAL | LED0616 | 87-A91-355-040 | 0E | C-LED,BR1112H-TR-RED | YUSTF | CDC-MP32 |
| O | ELECTRICAL | LED0617 | 87-A91-355-040 | 0E | C-LED,BR1112H-TR-RED | YUSTF | CDC-MP32 |
| O | ELECTRICAL | LED0619 | 87-A40-813-340 | 1E | C-LED,SEC1E01C BLU | YUSTF | CDC-MP32 |
| O | ELECTRICAL | LED0620 | 87-A40-813-340 | 1E | C-LED,SEC1E01C BLU | YUSTF | CDC-MP32 |
| O | ELECTRICAL | LED0621 | 87-A40-813-340 | 1E | C-LED,SEC1E01C BLU | YUSTF | CDC-MP32 |
| O | ELECTRICAL | LED0622 | 87-A40-813-340 | 1E | C-LED,SEC1E01C BLU | YUSTF | CDC-MP32 |
| O | ELECTRICAL | LED0625 | 87-A91-355-040 | 0E | C-LED,BR1112H-TR-RED | YUSTF | CDC-MP32 |
| O | ELECTRICAL | LED0626 | 87-A91-355-040 | 0E | C-LED,BR1112H-TR-RED | YUSTF | CDC-MP32 |
| S | ELECTRICAL | Q 0611 | 89-324-122-040 | 0E | C-TR,2SC2412KR | YUSTF | CDC-MP32 |
| S | ELECTRICAL | Q 0612 | 87-A30-287-040 | 0E | C-TR,DTC114TKA | YUSTF | CDC-MP32 |
| S | ELECTRICAL | Q 0613 | 87-A30-287-040 | 0E | C-TR,DTC114TKA | YUSTF | CDC-MP32 |
| S | ELECTRICAL | Q 0614 | 89-324-122-040 | 0E | C-TR,2SC2412KR | YUSTF | CDC-MP32 |
| S | ELECTRICAL | Q 0615 | 89-324-122-040 | 0E | C-TR,2SC2412KR | YUSTF | CDC-MP32 |
| X | ELECTRICAL | R 0601 | 88-108-102-080 | 0E | C-RES,U 1K-1/16W J | YUSTF | CDC-MP32 |
| X | ELECTRICAL | R 0602 | 88-108-102-080 | 0E | C-RES,U 1K-1/16W J | YUSTF | CDC-MP32 |
| X | ELECTRICAL | R 0603 | 88-108-102-080 | 0E | C-RES,U 1K-1/16W J | YUSTF | CDC-MP32 |
| X | ELECTRICAL | R 0604 | 88-108-102-080 | 0E | C-RES,U 1K-1/16W J | YUSTF | CDC-MP32 |
| X | ELECTRICAL | R 0605 | 88-108-333-080 | 0E | C-RES,U 33K-1/16W J | YUSTF | CDC-MP32 |
| X | ELECTRICAL | R 0606 | 88-108-103-080 | 0E | C-RES,U 10K-1/16W J | YUSTF | CDC-MP32 |
| X | ELECTRICAL | R 0607 | 88-108-103-080 | 0E | C-RES,U 10K-1/16W J | YUSTF | CDC-MP32 |
| X | ELECTRICAL | R 0608 | 88-108-103-080 | 0E | C-RES,U 10K-1/16W J | YUSTF | CDC-MP32 |
| X | ELECTRICAL | R 0609 | 88-108-103-080 | 0E | C-RES,U 10K-1/16W J | YUSTF | CDC-MP32 |
| X | ELECTRICAL | R 0612 | 88-118-471-080 | 0E | C-RES,S 470-1/10W J | YUSTF | CDC-MP32 |
| X | ELECTRICAL | R 0613 | 88-118-471-080 | 0E | C-RES,S 470-1/10W J | YUSTF | CDC-MP32 |
| X | ELECTRICAL | R 0615 | 88-108-331-080 | 0E | C-RES,U 330-1/16W J | YUSTF | CDC-MP32 |
| X | ELECTRICAL | R 0616 | 88-108-102-080 | 0E | C-RES,U 1K-1/16W J | YUSTF | CDC-MP32 |
| X | ELECTRICAL | R 0617 | 88-108-180-080 | 0E | C-RES,U 18-1/16W J | YUSTF | CDC-MP32 |
| X | ELECTRICAL | R 0618 | 88-108-102-080 | 0E | C-RES,U 1K-1/16W J | YUSTF | CDC-MP32 |
| X | ELECTRICAL | R 0619 | 88-108-332-080 | 0E | C-RES,U 3.3K-1/16W J | YUSTF | CDC-MP32 |
| X | ELECTRICAL | R 0620 | 88-118-331-080 | 0E | C-RES,S 330-1/10W J | YUSTF | CDC-MP32 |
| X | ELECTRICAL | R 0621 | 88-118-331-080 | 0E | C-RES,S 330-1/10W J | YUSTF | CDC-MP32 |
| X | ELECTRICAL | R 0651 | 88-118-471-080 | 0E | C-RES,S 470-1/10W J | YUSTF | CDC-MP32 |
| X | ELECTRICAL | R 0652 | 88-118-471-080 | 0E | C-RES,S 470-1/10W J | YUSTF | CDC-MP32 |
| X | ELECTRICAL | R 0653 | 88-118-471-080 | 0E | C-RES,S 470-1/10W J | YUSTF | CDC-MP32 |
| X | ELECTRICAL | R 0654 | 88-118-331-080 | 0E | C-RES,S 330-1/10W J | YUSTF | CDC-MP32 |
| X | ELECTRICAL | R 0655 | 88-108-152-080 | 0E | C-RES,U 1.5K-1/16W J | YUSTF | CDC-MP32 |
| X | ELECTRICAL | R 0656 | 88-108-152-080 | 0E | C-RES,U 1.5K-1/16W J | YUSTF | CDC-MP32 |
| X | ELECTRICAL | R 0657 | 88-118-331-080 | 0E | C-RES,S 330-1/10W J | YUSTF | CDC-MP32 |

PARTS LIST

! = Δ SAFTY PARTS
 C = Components marked

All components used on this model at the production line are shown in this service manual.

However, please note that not all components will be available as spare parts for after-sales service.

Components marked S and O are designated as spare parts for service and will be stocked at the spare parts centers.

Components marked X and R are not designated as spare parts for after sales service, and will not be stocked at the spare parts centers.

K NO. = Only use japanese.

| ! C | UNIT NAME | REF NO. | PARTS CODE | K NO. | DESCRIPTION | SUFFIX | MODEL NAME |
|-----|------------|---------|----------------|-------|----------------------------|--------|------------|
| X | ELECTRICAL | R 0658 | 88-118-331-080 | 0E | C-RES, S 330-1/10W J | YUSTF | CDC-MP32 |
| X | ELECTRICAL | R 0659 | 88-118-331-080 | 0E | C-RES, S 330-1/10W J | YUSTF | CDC-MP32 |
| X | ELECTRICAL | R 0660 | 88-118-331-080 | 0E | C-RES, S 330-1/10W J | YUSTF | CDC-MP32 |
| X | ELECTRICAL | R 0661 | 88-118-331-080 | 0E | C-RES, S 330-1/10W J | YUSTF | CDC-MP32 |
| O | ELECTRICAL | SW 0601 | 87-A90-001-080 | 1A | C-SW, TACT SKQMAL | YUSTF | CDC-MP32 |
| O | ELECTRICAL | SW 0602 | 87-A90-001-080 | 1A | C-SW, TACT SKQMAL | YUSTF | CDC-MP32 |
| O | ELECTRICAL | SW 0603 | 87-A90-001-080 | 1A | C-SW, TACT SKQMAL | YUSTF | CDC-MP32 |
| O | ELECTRICAL | SW 0604 | 87-A90-001-080 | 1A | C-SW, TACT SKQMAL | YUSTF | CDC-MP32 |
| O | ELECTRICAL | SW 0605 | 87-A90-001-080 | 1A | C-SW, TACT SKQMAL | YUSTF | CDC-MP32 |
| O | ELECTRICAL | SW 0606 | 87-036-220-080 | 1A | C-SW, TACT SKQDAA | YUSTF | CDC-MP32 |
| O | ELECTRICAL | SW 0607 | 87-036-220-080 | 1A | C-SW, TACT SKQDAA | YUSTF | CDC-MP32 |
| O | ELECTRICAL | SW 0608 | 87-036-220-080 | 1A | C-SW, TACT SKQDAA | YUSTF | CDC-MP32 |
| O | ELECTRICAL | SW 0609 | 87-036-220-080 | 1A | C-SW, TACT SKQDAA | YUSTF | CDC-MP32 |
| O | ELECTRICAL | SW 0610 | 87-036-220-080 | 1A | C-SW, TACT SKQDAA | YUSTF | CDC-MP32 |
| O | ELECTRICAL | SW 0611 | 87-036-220-080 | 1A | C-SW, TACT SKQDAA | YUSTF | CDC-MP32 |
| O | ELECTRICAL | SW 0612 | 87-036-220-080 | 1A | C-SW, TACT SKQDAA | YUSTF | CDC-MP32 |
| O | ELECTRICAL | SW 0613 | 87-036-220-080 | 1A | C-SW, TACT SKQDAA | YUSTF | CDC-MP32 |
| O | ELECTRICAL | SW 0614 | 87-036-220-080 | 1A | C-SW, TACT SKQDAA | YUSTF | CDC-MP32 |
| O | ELECTRICAL | SW 0615 | 87-036-220-080 | 1A | C-SW, TACT SKQDAA | YUSTF | CDC-MP32 |
| O | ELECTRICAL | SW 0616 | 87-036-220-080 | 1A | C-SW, TACT SKQDAA | YUSTF | CDC-MP32 |
| O | ELECTRICAL | SW 0617 | 87-036-220-080 | 1A | C-SW, TACT SKQDAA | YUSTF | CDC-MP32 |
| O | ELECTRICAL | SW 0618 | 87-036-220-080 | 1A | C-SW, TACT SKQDAA | YUSTF | CDC-MP32 |
| O | ELECTRICAL | SW 0620 | 87-A90-001-080 | 1A | C-SW, TACT SKQMAL | YUSTF | CDC-MP32 |
| O | KNOB | | 8B-KC7-004-010 | 1A | BTN, +/- | YUSTF | CDC-MP32 |
| O | KNOB | | 8B-KC7-005-010 | 1A | BTN, MUTE | YUSTF | CDC-MP32 |
| O | KNOB | | 8B-KC7-006-010 | 1A | BTN, TWIN | YUSTF | CDC-MP32 |
| O | KNOB | | 8B-KC7-010-010 | 1D | BTN, P-SET 7 | YUSTF | CDC-MP32 |
| X | MECHANISM | | M8-AZL-290-040 | -- | AZL-2 ANF | YUSTF | CDC-MP32 |
| O | MICON | C 0461 | 87-010-787-080 | 0E | C-CAP, U 0.022-25 K B | YUSTF | CDC-MP32 |
| O | MICON | C 0901 | 87-016-039-090 | 1B | CAP, DL 0.022F-5.5 Z 70 FM | YUSTF | CDC-MP32 |
| O | MICON | C 0902 | 87-012-358-080 | 0E | C-CAP, S 0.47-10 Z F CM/CB | YUSTF | CDC-MP32 |
| O | MICON | C 0903 | 87-010-831-080 | 0E | C-CAP, U 0.1-16 Z F | YUSTF | CDC-MP32 |
| O | MICON | C 0904 | 87-010-787-080 | 0E | C-CAP, U 0.022-25 K B | YUSTF | CDC-MP32 |
| O | MICON | C 0905 | 87-012-180-080 | 0E | C-CAP, U 22P-50 J CH | YUSTF | CDC-MP32 |
| O | MICON | C 0906 | 87-012-182-080 | 0E | C-CAP, U 27P-50 J CH | YUSTF | CDC-MP32 |
| O | MICON | C 0907 | 87-010-831-080 | 0E | C-CAP, U 0.1-16 Z F | YUSTF | CDC-MP32 |
| O | MICON | C 0908 | 87-012-282-080 | 0E | C-CAP, U 4700P-50 K B | YUSTF | CDC-MP32 |
| O | MICON | C 0909 | 87-012-274-080 | 0E | C-CAP, U 1000P-50 K B | YUSTF | CDC-MP32 |
| O | MICON | C 0910 | 87-012-195-080 | 0E | C-CAP, U 100P-50 J CH | YUSTF | CDC-MP32 |
| O | MICON | C 0911 | 87-012-195-080 | 0E | C-CAP, U 100P-50 J CH | YUSTF | CDC-MP32 |
| O | MICON | C 0912 | 87-010-787-080 | 0E | C-CAP, U 0.022-25 K B | YUSTF | CDC-MP32 |
| O | MICON | C 0913 | 87-010-787-080 | 0E | C-CAP, U 0.022-25 K B | YUSTF | CDC-MP32 |
| O | MICON | C 0915 | 87-012-274-080 | 0E | C-CAP, U 1000P-50 K B | YUSTF | CDC-MP32 |
| O | MICON | C 0916 | 87-010-787-080 | 0E | C-CAP, U 0.022-25 K B | YUSTF | CDC-MP32 |
| S | MICON | D 0461 | 87-A40-817-040 | 0E | C-ZENER, STZ6.8N | YUSTF | CDC-MP32 |
| S | MICON | D 0462 | 87-A40-817-040 | 0E | C-ZENER, STZ6.8N | YUSTF | CDC-MP32 |
| S | MICON | D 0463 | 87-A40-817-040 | 0E | C-ZENER, STZ6.8N | YUSTF | CDC-MP32 |
| S | MICON | D 0708 | 87-020-330-040 | 0E | C-DIODE, DAP202K | YUSTF | CDC-MP32 |
| S | MICON | D 0713 | 87-070-136-080 | 0E | ZENER, MTZJ5.1B | YUSTF | CDC-MP32 |
| S | MICON | D 0901 | 87-020-331-040 | 0E | C-DIODE, DAN202K | YUSTF | CDC-MP32 |
| S | MICON | D 0902 | 87-020-331-040 | 0E | C-DIODE, DAN202K | YUSTF | CDC-MP32 |
| S | MICON | D 0904 | 87-020-331-040 | 0E | C-DIODE, DAN202K | YUSTF | CDC-MP32 |
| S | MICON | D 0907 | 87-020-331-040 | 0E | C-DIODE, DAN202K | YUSTF | CDC-MP32 |
| S | MICON | D 0908 | 87-020-331-040 | 0E | C-DIODE, DAN202K | YUSTF | CDC-MP32 |
| S | MICON | D 0909 | 87-020-331-040 | 0E | C-DIODE, DAN202K | YUSTF | CDC-MP32 |
| S | MICON | D 0911 | 87-020-331-040 | 0E | C-DIODE, DAN202K | YUSTF | CDC-MP32 |
| S | MICON | IC 0901 | 8B-KC6-621-030 | 2M | C-IC, UPD178018AGC-598 | YUSTF | CDC-MP32 |
| S | MICON | IC 0903 | 87-020-784-040 | 1B | C-IC, TC4053BF | YUSTF | CDC-MP32 |
| O | MICON | L 0702 | 87-003-149-080 | 0E | COIL, 47UH J LAL02 | YUSTF | CDC-MP32 |
| S | MICON | Q 0461 | 87-A30-283-040 | 0E | C-TR, DTA114YKA | YUSTF | CDC-MP32 |
| S | MICON | Q 0462 | 87-A30-288-040 | 0E | C-TR, DTC114YKA | YUSTF | CDC-MP32 |
| X | MICON | R 0403 | 88-108-102-080 | 0E | C-RES, U 1K-1/16W J | YUSTF | CDC-MP32 |
| X | MICON | R 0461 | 88-108-102-080 | 0E | C-RES, U 1K-1/16W J | YUSTF | CDC-MP32 |
| X | MICON | R 0462 | 88-108-102-080 | 0E | C-RES, U 1K-1/16W J | YUSTF | CDC-MP32 |
| X | MICON | R 0463 | 88-108-102-080 | 0E | C-RES, U 1K-1/16W J | YUSTF | CDC-MP32 |
| X | MICON | R 0464 | 88-108-102-080 | 0E | C-RES, U 1K-1/16W J | YUSTF | CDC-MP32 |
| X | MICON | R 0465 | 88-108-102-080 | 0E | C-RES, U 1K-1/16W J | YUSTF | CDC-MP32 |
| X | MICON | R 0466 | 88-108-102-080 | 0E | C-RES, U 1K-1/16W J | YUSTF | CDC-MP32 |
| X | MICON | R 0467 | 88-108-102-080 | 0E | C-RES, U 1K-1/16W J | YUSTF | CDC-MP32 |
| X | MICON | R 0468 | 88-108-102-080 | 0E | C-RES, U 1K-1/16W J | YUSTF | CDC-MP32 |

PARTS LIST

! = Δ SAFTY PARTS
 C = Components marked

All components used on this model at the production line are shown in this service manual.

However, please note that not all components will be available as spare parts for after-sales service.

Components marked S and O are designated as spare parts for service and will be stocked at the spare parts centers.

Components marked X and R are not designated as spare parts for after sales service, and will not be stocked at the spare parts centers.

K NO. = Only use japanese.

| ! C | UNIT NAME | REF NO. | PARTS CODE | K NO. | DESCRIPTION | SUFFIX | MODEL NAME |
|-----|-----------|---------|----------------|-------|----------------------------|--------|------------|
| X | MICON | R 0469 | 88-108-102-080 | 0E | C-RES,U 1K-1/16W J | YUSTF | CDC-MP32 |
| X | MICON | R 0470 | 88-108-102-080 | 0E | C-RES,U 1K-1/16W J | YUSTF | CDC-MP32 |
| X | MICON | R 0471 | 88-108-102-080 | 0E | C-RES,U 1K-1/16W J | YUSTF | CDC-MP32 |
| X | MICON | R 0901 | 88-108-473-080 | 0E | C-RES,U 47K-1/16W J | YUSTF | CDC-MP32 |
| X | MICON | R 0902 | 88-108-104-080 | 0E | C-RES,U 100K-1/16W J | YUSTF | CDC-MP32 |
| X | MICON | R 0904 | 88-108-104-080 | 0E | C-RES,U 100K-1/16W J | YUSTF | CDC-MP32 |
| X | MICON | R 0905 | 88-108-104-080 | 0E | C-RES,U 100K-1/16W J | YUSTF | CDC-MP32 |
| X | MICON | R 0906 | 88-108-224-080 | 0E | C-RES,U 220K-1/16W J | YUSTF | CDC-MP32 |
| X | MICON | R 0907 | 88-108-102-080 | 0E | C-RES,U 1K-1/16W J | YUSTF | CDC-MP32 |
| X | MICON | R 0908 | 88-108-152-080 | 0E | C-RES,U 1.5K-1/16W J | YUSTF | CDC-MP32 |
| X | MICON | R 0909 | 88-108-473-080 | 0E | C-RES,U 47K-1/16W J | YUSTF | CDC-MP32 |
| X | MICON | R 0910 | 88-108-104-080 | 0E | C-RES,U 100K-1/16W J | YUSTF | CDC-MP32 |
| X | MICON | R 0911 | 88-108-222-080 | 0E | C-RES,U 2.2K-1/16W J | YUSTF | CDC-MP32 |
| X | MICON | R 0912 | 88-108-222-080 | 0E | C-RES,U 2.2K-1/16W J | YUSTF | CDC-MP32 |
| X | MICON | R 0913 | 88-108-104-080 | 0E | C-RES,U 100K-1/16W J | YUSTF | CDC-MP32 |
| X | MICON | R 0914 | 88-108-223-080 | 0E | C-RES,U 22K-1/16W J | YUSTF | CDC-MP32 |
| X | MICON | R 0915 | 88-108-223-080 | 0E | C-RES,U 22K-1/16W J | YUSTF | CDC-MP32 |
| X | MICON | R 0916 | 88-108-102-080 | 0E | C-RES,U 1K-1/16W J | YUSTF | CDC-MP32 |
| X | MICON | R 0917 | 88-108-102-080 | 0E | C-RES,U 1K-1/16W J | YUSTF | CDC-MP32 |
| X | MICON | R 0918 | 88-108-102-080 | 0E | C-RES,U 1K-1/16W J | YUSTF | CDC-MP32 |
| X | MICON | R 0919 | 88-108-102-080 | 0E | C-RES,U 1K-1/16W J | YUSTF | CDC-MP32 |
| X | MICON | R 0920 | 88-108-102-080 | 0E | C-RES,U 1K-1/16W J | YUSTF | CDC-MP32 |
| X | MICON | R 0921 | 88-108-102-080 | 0E | C-RES,U 1K-1/16W J | YUSTF | CDC-MP32 |
| X | MICON | R 0922 | 88-108-102-080 | 0E | C-RES,U 1K-1/16W J | YUSTF | CDC-MP32 |
| X | MICON | R 0923 | 88-108-102-080 | 0E | C-RES,U 1K-1/16W J | YUSTF | CDC-MP32 |
| X | MICON | R 0924 | 88-108-224-080 | 0E | C-RES,U 220K-1/16W J | YUSTF | CDC-MP32 |
| X | MICON | R 0929 | 88-108-102-080 | 0E | C-RES,U 1K-1/16W J | YUSTF | CDC-MP32 |
| X | MICON | R 0931 | 88-108-104-080 | 0E | C-RES,U 100K-1/16W J | YUSTF | CDC-MP32 |
| X | MICON | R 0932 | 88-108-104-080 | 0E | C-RES,U 100K-1/16W J | YUSTF | CDC-MP32 |
| X | MICON | R 0933 | 88-108-104-080 | 0E | C-RES,U 100K-1/16W J | YUSTF | CDC-MP32 |
| X | MICON | R 0934 | 88-108-223-080 | 0E | C-RES,U 22K-1/16W J | YUSTF | CDC-MP32 |
| X | MICON | R 0935 | 88-108-104-080 | 0E | C-RES,U 100K-1/16W J | YUSTF | CDC-MP32 |
| O | MICON | SW 0903 | 87-A91-152-010 | 1A | SW,SL 1-1-2 SSSS212-11-A | YUSTF | CDC-MP32 |
| O | MICON | X 0901 | 87-A70-175-010 | 1B | VIB,XTAL 4.5MHZ AT-49 | YUSTF | CDC-MP32 |
| O | OTHERS | | 85-ZL3-203-010 | 0E | MAGNET,ACU | YUSTF | CDC-MP32 |
| O | OTHERS | | 87-010-552-040 | 0E | CAP,E 22-16 M 5L SRE | YUSTF | CDC-MP32 |
| O | OTHERS | | 87-018-119-080 | 0E | CAP,TC U 100P-50 K B UP050 | YUSTF | CDC-MP32 |
| S | OTHERS | | 87-020-465-080 | 0E | DIODE,1SS133 | YUSTF | CDC-MP32 |
| X | OTHERS | | 87-600-021-210 | 0E | WIRE,P0-2-1 | YUSTF | CDC-MP32 |
| X | OTHERS | | 87-600-042-210 | 0E | WIRE,P0-4-2 | YUSTF | CDC-MP32 |
| X | OTHERS | | 87-612-042-210 | 0E | WIRE,B2-4-2 | YUSTF | CDC-MP32 |
| X | OTHERS | | 87-830-101-510 | 0E | TUBE,UL 1-15 | YUSTF | CDC-MP32 |
| X | OTHERS | | 88-118-000-080 | 0E | C-JUMPER,S | YUSTF | CDC-MP32 |
| X | OTHERS | | 88-121-104-080 | 0E | RES,100K-1/8W J | YUSTF | CDC-MP32 |
| X | OTHERS | | 88-121-152-080 | 0E | RES,1.5K-1/8W J | YUSTF | CDC-MP32 |
| X | OTHERS | | 88-121-224-080 | 0E | RES,220K-1/8W J | YUSTF | CDC-MP32 |
| X | OTHERS | | 88-121-683-080 | 0E | RES,68K-1/8W J | YUSTF | CDC-MP32 |
| X | OTHERS | | 8A-KC5-204-010 | 0E | SH,5-10-1.65 | YUSTF | CDC-MP32 |
| O | OTHERS | | 8B-KC1-213-110 | 0E | CHAS,SIDE L-BC | YUSTF | CDC-MP32 |
| O | OTHERS | | 8B-KC1-214-110 | 0E | CHAS,SIDE R-BC | YUSTF | CDC-MP32 |
| X | OTHERS | | 8B-KC6-204-010 | -- | SH,22.5-27-0.15 W/ADH BLK | YUSTF | CDC-MP32 |
| O | OTHERS | | 8B-KC7-201-010 | 0E | PLATE,LENS BOTTOM | YUSTF | CDC-MP32 |
| O | OTHERS | | 8B-KC7-204-010 | 0E | CASE,LCD | YUSTF | CDC-MP32 |
| X | OTHERS | | 8B-KC7-205-010 | -- | PLATE,PANEL-SW | YUSTF | CDC-MP32 |
| X | OTHERS | | 8B-KC7-206-010 | -- | SHAFT,PANEL-SW | YUSTF | CDC-MP32 |
| O | OTHERS | | 8B-KC7-207-010 | 1A | PLATE,PANEL A'SSY | YUSTF | CDC-MP32 |
| O | OTHERS | | 8B-KC7-208-010 | 1A | COVER,DUST | YUSTF | CDC-MP32 |
| O | OTHERS | | 8B-KC7-215-010 | 0E | SHAFT,FLAP L/R | YUSTF | CDC-MP32 |
| O | OTHERS | | 8B-KC7-218-010 | 0E | TERMINAL,PWB | YUSTF | CDC-MP32 |
| X | OTHERS | | 8B-KC7-221-010 | 1A | SH,L-BT 18 | YUSTF | CDC-MP32 |
| O | OTHERS | | 8B-KC7-222-010 | 0E | PLATE,MAGNET | YUSTF | CDC-MP32 |
| X | OTHERS | | 8B-KC7-224-010 | 0E | SH,5.5-10-0.7 W/ADH BLK | YUSTF | CDC-MP32 |
| X | OTHERS | | 8B-KC7-225-010 | 0E | SH,6-10-0.1 W/ADH BLK | YUSTF | CDC-MP32 |
| X | OTHERS | | 8B-KC7-226-010 | 0E | SH,MIRROR 2-7-0.025 | YUSTF | CDC-MP32 |
| X | OTHERS | | 8B-KC7-230-010 | 0E | SH,FLEX | YUSTF | CDC-MP32 |
| X | OTHERS | | 8B-KC7-232-010 | 0E | SH,REMOTE | YUSTF | CDC-MP32 |
| X | OTHERS | | 8B-KC7-233-010 | 0E | SH,TACT | YUSTF | CDC-MP32 |
| X | OTHERS | | 8B-KC7-234-010 | 0E | SH,CABI | YUSTF | CDC-MP32 |
| X | OTHERS | | 8B-KC7-235-010 | 0E | SH,8-2.5-0.075 W/ADH BLK | YUSTF | CDC-MP32 |
| X | OTHERS | | 8B-KC7-236-010 | 0E | SH,20-7-0.05 W/ADH | YUSTF | CDC-MP32 |

PARTS LIST

! = Δ SAFTY PARTS
 C = Components marked

All components used on this model at the production line are shown in this service manual.

However, please note that not all components will be available as spare parts for after-sales service.

Components marked S and O are designated as spare parts for service and will be stocked at the spare parts centers.

Components marked X and R are not designated as spare parts for after sales service, and will not be stocked at the spare parts centers.

K NO. = Only use Japanese.

| ! C | UNIT NAME | REF NO. | PARTS CODE | K NO. | DESCRIPTION | SUFFIX | MODEL NAME |
|-----|------------------|---------|----------------|-------|--------------------------|--------|------------|
| X | OTHERS | | 8B-KC7-238-010 | 0E | SH, 3-10-0.3 W/ADH BLK | YUSTF | CDC-MP32 |
| O | OTHERS | | 8B-KC7-251-010 | 1A | COVER, BT-B | YUSTF | CDC-MP32 |
| X | OTHERS | | 8B-KC7-253-010 | 0E | SH, BER | YUSTF | CDC-MP32 |
| O | OTHERS | | 8B-KC7-611-010 | 1B | PWB, FLEX DISP | YUSTF | CDC-MP32 |
| O | OTHERS | | 8B-KC7-612-010 | 1A | PWB, FLEX KEY | YUSTF | CDC-MP32 |
| X | OTHERS | | 8B-KCG-240-110 | 1C | PANEL, HT-SINK -B | YUSTF | CDC-MP32 |
| O | OTHERS | | 8Z-KC1-256-010 | 1B | COVER, BOTTOM RDS | YUSTF | CDC-MP32 |
| O | OTHERS | * | 8A-KC7-224-010 | 0E | HLDR, P-IC -AC | YUSTF | CDC-MP32 |
| O | OTHERS | * | 8A-KC7-225-010 | 0E | HLDR, CD-AC | YUSTF | CDC-MP32 |
| O | OTHERS | * | 8B-KC1-602-010 | 0E | F-CABLE, 4P (AUX-W/S) | YUSTF | CDC-MP32 |
| O | OTHERS | * | 8B-KC6-201-010 | 0E | HLDR, STATIC MP3 | YUSTF | CDC-MP32 |
| X | OTHERS | * | 8B-KC6-202-010 | 0E | SH, HLDR STATIC | YUSTF | CDC-MP32 |
| O | OTHERS | * | 8B-KC7-202-010 | 1A | LENS, LCD | YUSTF | CDC-MP32 |
| X | OTHERS | * | 8B-KC7-203-010 | 0E | SH, LCD | YUSTF | CDC-MP32 |
| O | OTHERS | * | 8B-KC7-209-010 | 0E | HLDR, SP-L | YUSTF | CDC-MP32 |
| O | OTHERS | * | 8B-KC7-210-010 | 0E | HLDR, SP-R | YUSTF | CDC-MP32 |
| O | OTHERS | * | 8B-KC7-211-010 | 0E | HLDR, MECHA | YUSTF | CDC-MP32 |
| O | OTHERS | * | 8B-KC7-212-010 | 0E | HLDR, TR2-B | YUSTF | CDC-MP32 |
| X | OTHERS | * | 8B-KC7-213-010 | 0E | SH, ADH WINDOW | YUSTF | CDC-MP32 |
| X | OTHERS | * | 8B-KC7-214-010 | 0E | SH, CABI REAR | YUSTF | CDC-MP32 |
| O | OTHERS | * | 8B-KC7-217-010 | 0E | HLDR, MECHA FR | YUSTF | CDC-MP32 |
| X | OTHERS | * | 8B-KC7-220-010 | 0E | SH, PANEL | YUSTF | CDC-MP32 |
| X | OTHERS | * | 8Z-KC1-234-210 | 1B | SH, PWB | YUSTF | CDC-MP32 |
| O | OTHERS | C 0366 | 87-010-555-040 | 0E | CAP, E 100-10 M 5L SRE | YUSTF | CDC-MP32 |
| O | OTHERS | C 0407 | 87-010-494-040 | 0E | CAP, E 1-50 M 5L SRE | YUSTF | CDC-MP32 |
| O | OTHERS | C 0408 | 87-010-494-040 | 0E | CAP, E 1-50 M 5L SRE | YUSTF | CDC-MP32 |
| O | OTHERS | C 0751 | 87-012-368-080 | 0E | C-CAP, S 0.1-50 Z F | YUSTF | CDC-MP32 |
| O | OTHERS | C 0752 | 87-012-368-080 | 0E | C-CAP, S 0.1-50 Z F | YUSTF | CDC-MP32 |
| O | OTHERS | C 0753 | 87-012-368-080 | 0E | C-CAP, S 0.1-50 Z F | YUSTF | CDC-MP32 |
| O | OTHERS | C 0754 | 87-010-553-040 | 0E | CAP, E 47-16 M 5L SRE | YUSTF | CDC-MP32 |
| S | OTHERS | D 0201 | 87-A30-287-040 | 0E | C-TR, DTC114TKA | YUSTF | CDC-MP32 |
| S | OTHERS | D 0709 | 87-070-136-080 | 0E | ZENER, MTZJ5.1B | YUSTF | CDC-MP32 |
| O | OTHERS | IC 0602 | 87-A90-951-010 | 1C | RCR UNIT, SBX1971-52 | YUSTF | CDC-MP32 |
| S | OTHERS | IC 0751 | 87-A20-712-040 | 1B | C-IC, BA6417F | YUSTF | CDC-MP32 |
| O | OTHERS | J 0601 | 87-A60-925-010 | 1A | JACK, 3.6 BLK ST W/SW | YUSTF | CDC-MP32 |
| O | OTHERS | L 0402 | 87-003-102-080 | 0E | COIL, 10UH J LAL02 | YUSTF | CDC-MP32 |
| O | OTHERS | LCD0701 | 8B-KC7-626-010 | 2M | LCD, BKC-1/7 | YUSTF | CDC-MP32 |
| O | OTHERS | LED0605 | 87-A41-085-010 | 1E | LED, NSPW315BS WHT | YUSTF | CDC-MP32 |
| O | OTHERS | LED0606 | 87-A41-085-010 | 1E | LED, NSPW315BS WHT | YUSTF | CDC-MP32 |
| O | OTHERS | LED0618 | 87-A41-096-010 | 1D | LED, E1L31-3B0A2 BLU | YUSTF | CDC-MP32 |
| O | OTHERS | LED0951 | 87-A40-228-010 | 0E | LED, SLR-342MG T31 GREEN | YUSTF | CDC-MP32 |
| O | OTHERS | PS 0671 | 87-A92-061-080 | 1A | C-SNSR, GP1S092 HCPI | YUSTF | CDC-MP32 |
| X | OTHERS | R 0405 | 88-108-152-080 | 0E | C-RES, U 1.5K-1/16W J | YUSTF | CDC-MP32 |
| X | OTHERS | R 0406 | 88-108-152-080 | 0E | C-RES, U 1.5K-1/16W J | YUSTF | CDC-MP32 |
| X | OTHERS | R 0407 | 88-108-103-080 | 0E | C-RES, U 10K-1/16W J | YUSTF | CDC-MP32 |
| X | OTHERS | R 0408 | 88-108-103-080 | 0E | C-RES, U 10K-1/16W J | YUSTF | CDC-MP32 |
| X | OTHERS | R 0475 | 88-108-224-080 | 0E | C-RES, U 220K-1/16W J | YUSTF | CDC-MP32 |
| X | OTHERS | R 0476 | 88-108-224-080 | 0E | C-RES, U 220K-1/16W J | YUSTF | CDC-MP32 |
| X | OTHERS | R 0671 | 88-118-331-080 | 0E | C-RES, S 330-1/10W J | YUSTF | CDC-MP32 |
| X | OTHERS | R 0671 | 88-118-391-080 | 0E | C-RES, S 390-1/10W J | YUSTF | CDC-MP32 |
| X | OTHERS | R 0674 | 88-108-000-080 | 0E | C-JUMPER, U | YUSTF | CDC-MP32 |
| X | OTHERS | R 0675 | 88-108-000-080 | 0E | C-JUMPER, U | YUSTF | CDC-MP32 |
| X | OTHERS | R 0751 | 88-108-123-080 | 0E | C-RES, U 12K-1/16W J | YUSTF | CDC-MP32 |
| X | OTHERS | R 0752 | 88-108-153-080 | 0E | C-RES, U 15K-1/16W J | YUSTF | CDC-MP32 |
| X | OTHERS | R 0753 | 88-108-103-080 | 0E | C-RES, U 10K-1/16W J | YUSTF | CDC-MP32 |
| X | OTHERS | R 0754 | 88-108-103-080 | 0E | C-RES, U 10K-1/16W J | YUSTF | CDC-MP32 |
| O | OTHERS | R 0755 | 87-010-831-080 | 0E | C-CAP, U 0.1-16 Z F | YUSTF | CDC-MP32 |
| O | OTHERS | R 0756 | 87-010-831-080 | 0E | C-CAP, U 0.1-16 Z F | YUSTF | CDC-MP32 |
| O | OTHERS | SW 0671 | 87-A92-039-080 | 0E | C-SW, PUSH ESE22MH24XQ | YUSTF | CDC-MP32 |
| O | OTHERS (RC UNIT) | | R8-BZR-190-040 | 2M | BZR-1 RC3YUNF | YUSTF | CDC-MP32 |
| X | PACKING DU | | 87-B40-087-010 | 0E | BAG, PV 0.04-250-350 PL | YUSTF | CDC-MP32 |
| X | PACKING DU | | 8B-KC6-851-010 | 1B | CTN, PRINTED 2 YUSTF | YUSTF | CDC-MP32 |
| X | PACKING DU | | 8B-KC6-852-010 | 1D | CTN, OUTER 2 YUSTF | YUSTF | CDC-MP32 |
| X | PACKING DU | | 8B-KC7-851-010 | 0E | CUSHION, LEFT 7 AIS | YUSTF | CDC-MP32 |
| X | PACKING DU | | 8B-KC7-852-010 | 0E | CUSHION, RIGHT 7 AIS | YUSTF | CDC-MP32 |
| X | PLATE | | 87-B40-154-010 | 0E | LBL, BAR-CODE CU | YUSTF | CDC-MP32 |
| X | PLATE | | 87-B40-282-010 | 0E | LBL, BAR-CODE AU 35X8 | YUSTF | CDC-MP32 |
| X | PLATE | | 8B-KC6-020-010 | 0E | LBL, SPEC MP32 YU | YUSTF | CDC-MP32 |
| X | PLATE | | 8Z-KC5-013-010 | 0E | LBL, FCC | YUSTF | CDC-MP32 |
| X | PLATE | | 8Z-KC5-014-010 | 0E | LBL, DHHS | YUSTF | CDC-MP32 |

PARTS LIST

! = Δ SAFTY PARTS
 C = Components marked

All components used on this model at the production line are shown in this service manual.

However, please note that not all components will be available as spare parts for after-sales service.

Components marked S and O are designated as spare parts for service and will be stocked at the spare parts centers.

Components marked X and R are not designated as spare parts for after sales service, and will not be stocked at the spare parts centers.

K NO. = Only use japanese.

| ! C | UNIT NAME | REF NO. | PARTS CODE | K NO. | DESCRIPTION | SUFFIX | MODEL NAME |
|-----|--------------|---------|----------------|-------|---------------------------|--------|------------|
| O | POWER AMP | C 0501 | 87-012-358-080 | 0E | C-CAP,S 0.47-10 Z F CM/CB | YUSTF | CDC-MP32 |
| O | POWER AMP | C 0502 | 87-012-358-080 | 0E | C-CAP,S 0.47-10 Z F CM/CB | YUSTF | CDC-MP32 |
| O | POWER AMP | C 0503 | 87-012-358-080 | 0E | C-CAP,S 0.47-10 Z F CM/CB | YUSTF | CDC-MP32 |
| O | POWER AMP | C 0504 | 87-012-358-080 | 0E | C-CAP,S 0.47-10 Z F CM/CB | YUSTF | CDC-MP32 |
| O | POWER AMP | C 0505 | 87-012-270-080 | 0E | C-CAP,U 470P-50 K B | YUSTF | CDC-MP32 |
| O | POWER AMP | C 0506 | 87-012-270-080 | 0E | C-CAP,U 470P-50 K B | YUSTF | CDC-MP32 |
| O | POWER AMP | C 0507 | 87-012-270-080 | 0E | C-CAP,U 470P-50 K B | YUSTF | CDC-MP32 |
| O | POWER AMP | C 0508 | 87-012-270-080 | 0E | C-CAP,U 470P-50 K B | YUSTF | CDC-MP32 |
| O | POWER AMP | C 0510 | 87-010-498-040 | 0E | CAP,E 10-16 M 5L SRE | YUSTF | CDC-MP32 |
| O | POWER AMP | C 0515 | 8A-KC7-623-000 | 1B | CAP,E 2200-16 125 BT | YUSTF | CDC-MP32 |
| O | POWER AMP | C 0516 | 87-012-368-080 | 0E | C-CAP,S 0.1-50 Z F | YUSTF | CDC-MP32 |
| O | POWER AMP | C 0517 | 87-012-368-080 | 0E | C-CAP,S 0.1-50 Z F | YUSTF | CDC-MP32 |
| O | POWER AMP | C 0519 | 87-010-494-040 | 0E | CAP,E 1-50 M 5L SRE | YUSTF | CDC-MP32 |
| O | POWER AMP | C 0522 | 87-012-368-080 | 0E | C-CAP,S 0.1-50 Z F | YUSTF | CDC-MP32 |
| S | POWER AMP | D 0501 | 87-001-783-080 | 0E | DIODE,1N4002 | YUSTF | CDC-MP32 |
| S | POWER AMP | D 0502 | 87-001-783-080 | 0E | DIODE,1N4002 | YUSTF | CDC-MP32 |
| S | POWER AMP | D 0503 | 87-001-783-080 | 0E | DIODE,1N4002 | YUSTF | CDC-MP32 |
| S | POWER AMP | D 0504 | 87-001-783-080 | 0E | DIODE,1N4002 | YUSTF | CDC-MP32 |
| S | POWER AMP | D 0505 | 87-001-783-080 | 0E | DIODE,1N4002 | YUSTF | CDC-MP32 |
| S | POWER AMP | D 0506 | 87-001-783-080 | 0E | DIODE,1N4002 | YUSTF | CDC-MP32 |
| S | POWER AMP | D 0507 | 87-001-783-080 | 0E | DIODE,1N4002 | YUSTF | CDC-MP32 |
| S | POWER AMP | D 0508 | 87-001-783-080 | 0E | DIODE,1N4002 | YUSTF | CDC-MP32 |
| S | POWER AMP | D 0513 | 87-020-331-040 | 0E | C-DIODE,DAN202K | YUSTF | CDC-MP32 |
| S | POWER AMP | IC 0501 | 8B-KCF-616-010 | 2P | IC,TA8273H | YUSTF | CDC-MP32 |
| X | POWER AMP | R 0501 | 88-108-103-080 | 0E | C-RES,U 10K-1/16W J | YUSTF | CDC-MP32 |
| X | POWER AMP | R 0502 | 88-108-103-080 | 0E | C-RES,U 10K-1/16W J | YUSTF | CDC-MP32 |
| X | POWER AMP | R 0503 | 88-108-103-080 | 0E | C-RES,U 10K-1/16W J | YUSTF | CDC-MP32 |
| X | POWER AMP | R 0504 | 88-108-103-080 | 0E | C-RES,U 10K-1/16W J | YUSTF | CDC-MP32 |
| X | POWER AMP | R 0505 | 88-108-223-080 | 0E | C-RES,U 22K-1/16W J | YUSTF | CDC-MP32 |
| X | POWER AMP | R 0506 | 88-108-223-080 | 0E | C-RES,U 22K-1/16W J | YUSTF | CDC-MP32 |
| X | POWER AMP | R 0507 | 88-108-223-080 | 0E | C-RES,U 22K-1/16W J | YUSTF | CDC-MP32 |
| X | POWER AMP | R 0508 | 88-108-223-080 | 0E | C-RES,U 22K-1/16W J | YUSTF | CDC-MP32 |
| X | POWER AMP | R 0509 | 88-108-103-080 | 0E | C-RES,U 10K-1/16W J | YUSTF | CDC-MP32 |
| O | POWER SUPPLY | C 0406 | 87-010-759-080 | 0E | C-CAP,U 0.1-25 Z F | YUSTF | CDC-MP32 |
| O | POWER SUPPLY | C 0701 | 87-012-278-080 | 0E | C-CAP,U 2200P-50 K B | YUSTF | CDC-MP32 |
| O | POWER SUPPLY | C 0704 | 87-012-368-080 | 0E | C-CAP,S 0.1-50 Z F | YUSTF | CDC-MP32 |
| O | POWER SUPPLY | C 0705 | 87-012-278-080 | 0E | C-CAP,U 2200P-50 K B | YUSTF | CDC-MP32 |
| O | POWER SUPPLY | C 0706 | 87-010-553-040 | 0E | CAP,E 47-16 M 5L SRE | YUSTF | CDC-MP32 |
| O | POWER SUPPLY | C 0707 | 87-010-787-080 | 0E | C-CAP,U 0.022-25 K B | YUSTF | CDC-MP32 |
| O | POWER SUPPLY | C 0708 | 87-010-553-040 | 0E | CAP,E 47-16 M 5L SRE | YUSTF | CDC-MP32 |
| O | POWER SUPPLY | C 0709 | 87-010-759-080 | 0E | C-CAP,U 0.1-25 Z F | YUSTF | CDC-MP32 |
| O | POWER SUPPLY | C 0713 | 87-010-759-080 | 0E | C-CAP,U 0.1-25 Z F | YUSTF | CDC-MP32 |
| O | POWER SUPPLY | C 0714 | 87-010-787-080 | 0E | C-CAP,U 0.022-25 K B | YUSTF | CDC-MP32 |
| O | POWER SUPPLY | C 0715 | 87-010-759-080 | 0E | C-CAP,U 0.1-25 Z F | YUSTF | CDC-MP32 |
| O | POWER SUPPLY | C 0716 | 87-010-759-080 | 0E | C-CAP,U 0.1-25 Z F | YUSTF | CDC-MP32 |
| O | POWER SUPPLY | C 0717 | 87-010-759-080 | 0E | C-CAP,U 0.1-25 Z F | YUSTF | CDC-MP32 |
| O | POWER SUPPLY | C 0718 | 87-010-759-080 | 0E | C-CAP,U 0.1-25 Z F | YUSTF | CDC-MP32 |
| O | POWER SUPPLY | C 0719 | 87-010-759-080 | 0E | C-CAP,U 0.1-25 Z F | YUSTF | CDC-MP32 |
| O | POWER SUPPLY | C 0720 | 87-010-787-080 | 0E | C-CAP,U 0.022-25 K B | YUSTF | CDC-MP32 |
| O | POWER SUPPLY | C 0723 | 87-010-759-080 | 0E | C-CAP,U 0.1-25 Z F | YUSTF | CDC-MP32 |
| O | POWER SUPPLY | C 0725 | 87-010-553-040 | 0E | CAP,E 47-16 M 5L SRE | YUSTF | CDC-MP32 |
| S | POWER SUPPLY | D 0701 | 87-A40-798-010 | 0E | DIODE,1N5402 (3A/200V) | YUSTF | CDC-MP32 |
| S | POWER SUPPLY | D 0706 | 87-A40-624-080 | 0E | ZENER,MTZJ10A | YUSTF | CDC-MP32 |
| S | POWER SUPPLY | D 0707 | 87-A40-344-080 | 0E | ZENER,MTZJ6.2C | YUSTF | CDC-MP32 |
| S | POWER SUPPLY | D 0710 | 87-A40-624-080 | 0E | ZENER,MTZJ10A | YUSTF | CDC-MP32 |
| S | POWER SUPPLY | D 0711 | 87-017-931-080 | 0E | ZENER,MTZJ5.6B | YUSTF | CDC-MP32 |
| S | POWER SUPPLY | D 0712 | 87-070-136-080 | 0E | ZENER,MTZJ5.1B | YUSTF | CDC-MP32 |
| S | POWER SUPPLY | D 0716 | 87-A40-620-080 | 0E | ZENER,MTZJ6.2A | YUSTF | CDC-MP32 |
| S | POWER SUPPLY | D 0717 | 87-020-331-040 | 0E | C-DIODE,DAN202K | YUSTF | CDC-MP32 |
| S | POWER SUPPLY | F 0701 | 8Z-KC1-621-010 | 1B | FUSE,15A 32V | YUSTF | CDC-MP32 |
| S | POWER SUPPLY | IC 0701 | 88-KT1-606-080 | 1A | IC,PST994D | YUSTF | CDC-MP32 |
| X | POWER SUPPLY | JR 0012 | 88-108-000-080 | 0E | C-JUMPER,U | YUSTF | CDC-MP32 |
| O | POWER SUPPLY | L 0403 | 87-003-102-080 | 0E | COIL,10UH J LAL02 | YUSTF | CDC-MP32 |
| O | POWER SUPPLY | L 0701 | 8B-KCF-615-010 | 1C | FLTR,AMORPHOUS -CHOKE | YUSTF | CDC-MP32 |
| X | POWER SUPPLY | L 0703 | 88-100-000-080 | 0E | PLATING-JW, 0.58 SN95 | YUSTF | CDC-MP32 |
| S | POWER SUPPLY | Q 0701 | 87-A30-290-010 | 1B | TR,KTA1658(Y) | YUSTF | CDC-MP32 |
| S | POWER SUPPLY | Q 0702 | 86-NFZ-664-040 | 0E | C-TR,DTC143TKA | YUSTF | CDC-MP32 |
| S | POWER SUPPLY | Q 0704 | 87-A30-291-010 | 1B | TR,KTC4369(Y) | YUSTF | CDC-MP32 |
| O | POWER SUPPLY | Q 0708 | 89-418-580-080 | 0E | TR,2SD1858TV2 | YUSTF | CDC-MP32 |
| S | POWER SUPPLY | Q 0709 | 87-A30-291-010 | 1B | TR,KTC4369(Y) | YUSTF | CDC-MP32 |

PARTS LIST

! = Δ SAFTY PARTS
 C = Components marked

All components used on this model at the production line are shown in this service manual.

However, please note that not all components will be available as spare parts for after-sales service.

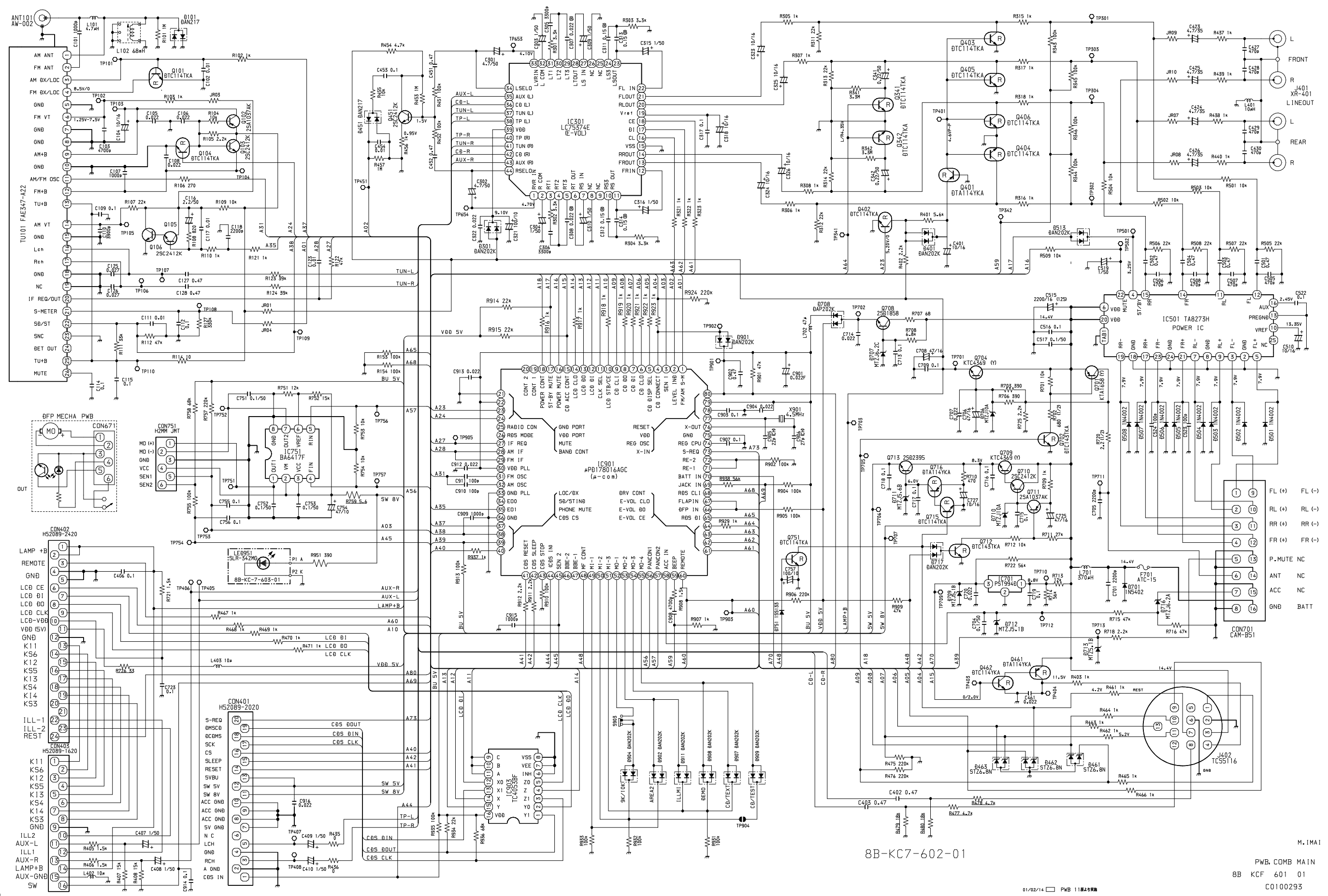
Components marked S and O are designated as spare parts for service and will be stocked at the spare parts centers.

Components marked X and R are not designated as spare parts for after sales service, and will not be stocked at the spare parts centers.

K NO. = Only use Japanese.

| ! C | UNIT NAME | REF NO. | PARTS CODE | K NO. | DESCRIPTION | SUFFIX | MODEL NAME |
|-----|-----------|---------|----------------|-------|---------------------------|--------|------------|
| O | TUNER | C 0105 | 87-010-787-080 | 0E | C-CAP,U 0.022-25 K B | YUSTF | CDC-MP32 |
| O | TUNER | C 0106 | 87-010-787-080 | 0E | C-CAP,U 0.022-25 K B | YUSTF | CDC-MP32 |
| O | TUNER | C 0107 | 87-012-274-080 | 0E | C-CAP,U 1000P-50 K B | YUSTF | CDC-MP32 |
| O | TUNER | C 0108 | 87-010-787-080 | 0E | C-CAP,U 0.022-25 K B | YUSTF | CDC-MP32 |
| O | TUNER | C 0109 | 87-010-831-080 | 0E | C-CAP,U 0.1-16 Z F | YUSTF | CDC-MP32 |
| O | TUNER | C 0110 | 87-012-281-080 | 0E | C-CAP,U 3900P-50 K B GRM | YUSTF | CDC-MP32 |
| O | TUNER | C 0111 | 87-012-286-080 | 0E | C-CAP,U 0.01-25 K B | YUSTF | CDC-MP32 |
| O | TUNER | C 0112 | 87-010-831-080 | 0E | C-CAP,U 0.1-16 Z F | YUSTF | CDC-MP32 |
| O | TUNER | C 0114 | 87-010-831-080 | 0E | C-CAP,U 0.1-16 Z F | YUSTF | CDC-MP32 |
| O | TUNER | C 0115 | 87-010-831-080 | 0E | C-CAP,U 0.1-16 Z F | YUSTF | CDC-MP32 |
| O | TUNER | C 0116 | 87-010-495-040 | 0E | CAP,E 2.2-50 M 5L SRE | YUSTF | CDC-MP32 |
| O | TUNER | C 0117 | 87-012-286-080 | 0E | C-CAP,U 0.01-25 K B | YUSTF | CDC-MP32 |
| O | TUNER | C 0118 | 87-012-278-080 | 0E | C-CAP,U 2200P-50 K B | YUSTF | CDC-MP32 |
| O | TUNER | C 0123 | 87-012-286-080 | 0E | C-CAP,U 0.01-25 K B | YUSTF | CDC-MP32 |
| O | TUNER | C 0125 | 87-A11-228-080 | 0E | C-CAP,U 0.027-25 K B | YUSTF | CDC-MP32 |
| O | TUNER | C 0126 | 87-A11-228-080 | 0E | C-CAP,U 0.027-25 K B | YUSTF | CDC-MP32 |
| O | TUNER | C 0127 | 87-012-358-080 | 0E | C-CAP,S 0.47-10 Z F CM/CB | YUSTF | CDC-MP32 |
| O | TUNER | C 0128 | 87-012-358-080 | 0E | C-CAP,S 0.47-10 Z F CM/CB | YUSTF | CDC-MP32 |
| S | TUNER | D 0101 | 87-A40-250-040 | 0E | C-DIODE,DAN217 | YUSTF | CDC-MP32 |
| X | TUNER | JR 0001 | 88-108-000-080 | 0E | C-JUMPER,U | YUSTF | CDC-MP32 |
| X | TUNER | JR 0003 | 88-108-000-080 | 0E | C-JUMPER,U | YUSTF | CDC-MP32 |
| X | TUNER | JR 0004 | 88-108-000-080 | 0E | C-JUMPER,U | YUSTF | CDC-MP32 |
| O | TUNER | L 0101 | 87-003-143-080 | 0E | COIL,4.7UH K LAL02 | YUSTF | CDC-MP32 |
| O | TUNER | L 0102 | 8Z-KT1-619-010 | 1A | COIL,68MH K7-D | YUSTF | CDC-MP32 |
| S | TUNER | Q 0101 | 87-A30-287-040 | 0E | C-TR,DTC114TKA | YUSTF | CDC-MP32 |
| S | TUNER | Q 0102 | 87-A30-289-040 | 0E | C-TR,2SA1037AK(Q) | YUSTF | CDC-MP32 |
| S | TUNER | Q 0103 | 89-324-122-040 | 0E | C-TR,2SC2412KR | YUSTF | CDC-MP32 |
| S | TUNER | Q 0104 | 87-A30-287-040 | 0E | C-TR,DTC114TKA | YUSTF | CDC-MP32 |
| S | TUNER | Q 0105 | 89-324-122-040 | 0E | C-TR,2SC2412KR | YUSTF | CDC-MP32 |
| S | TUNER | Q 0106 | 89-324-122-040 | 0E | C-TR,2SC2412KR | YUSTF | CDC-MP32 |
| X | TUNER | R 0101 | 88-108-105-080 | 0E | C-RES,U 1M-1/16W J | YUSTF | CDC-MP32 |
| X | TUNER | R 0102 | 88-108-102-080 | 0E | C-RES,U 1K-1/16W J | YUSTF | CDC-MP32 |
| X | TUNER | R 0103 | 88-108-102-080 | 0E | C-RES,U 1K-1/16W J | YUSTF | CDC-MP32 |
| X | TUNER | R 0104 | 88-108-103-080 | 0E | C-RES,U 10K-1/16W J | YUSTF | CDC-MP32 |
| X | TUNER | R 0105 | 88-108-222-080 | 0E | C-RES,U 2.2K-1/16W J | YUSTF | CDC-MP32 |
| X | TUNER | R 0106 | 88-108-271-080 | 0E | C-RES,U 270-1/16W J | YUSTF | CDC-MP32 |
| X | TUNER | R 0107 | 88-108-223-080 | 0E | C-RES,U 22K-1/16W J | YUSTF | CDC-MP32 |
| X | TUNER | R 0108 | 88-108-821-080 | 0E | C-RES,U 820-1/16W J | YUSTF | CDC-MP32 |
| X | TUNER | R 0109 | 88-108-103-080 | 0E | C-RES,U 10K-1/16W J | YUSTF | CDC-MP32 |
| X | TUNER | R 0110 | 88-108-102-080 | 0E | C-RES,U 1K-1/16W J | YUSTF | CDC-MP32 |
| X | TUNER | R 0111 | 88-108-333-080 | 0E | C-RES,U 33K-1/16W J | YUSTF | CDC-MP32 |
| X | TUNER | R 0112 | 88-108-473-080 | 0E | C-RES,U 47K-1/16W J | YUSTF | CDC-MP32 |
| X | TUNER | R 0114 | 88-118-100-080 | 0E | C-RES,S 10-1/10W J | YUSTF | CDC-MP32 |
| X | TUNER | R 0121 | 88-108-102-080 | 0E | C-RES,U 1K-1/16W J | YUSTF | CDC-MP32 |
| X | TUNER | R 0122 | 88-108-473-080 | 0E | C-RES,U 47K-1/16W J | YUSTF | CDC-MP32 |
| X | TUNER | R 0123 | 88-108-393-080 | 0E | C-RES,U 39K-1/16W J | YUSTF | CDC-MP32 |
| X | TUNER | R 0124 | 88-108-393-080 | 0E | C-RES,U 39K-1/16W J | YUSTF | CDC-MP32 |
| X | TUNER | R 0127 | 88-108-334-080 | 0E | C-RES,U 330K-1/16W J | YUSTF | CDC-MP32 |
| X | TUNER | R 0153 | 88-108-104-080 | 0E | C-RES,U 100K-1/16W J | YUSTF | CDC-MP32 |
| X | TUNER | R 0154 | 88-108-104-080 | 0E | C-RES,U 100K-1/16W J | YUSTF | CDC-MP32 |
| O | TUNER | TU 0101 | 8B-KCF-621-110 | 2Y | TU UNIT, FAE347-A26 | YUSTF | CDC-MP32 |

SCHEMATIC DIAGRAM - 1 (MAIN)

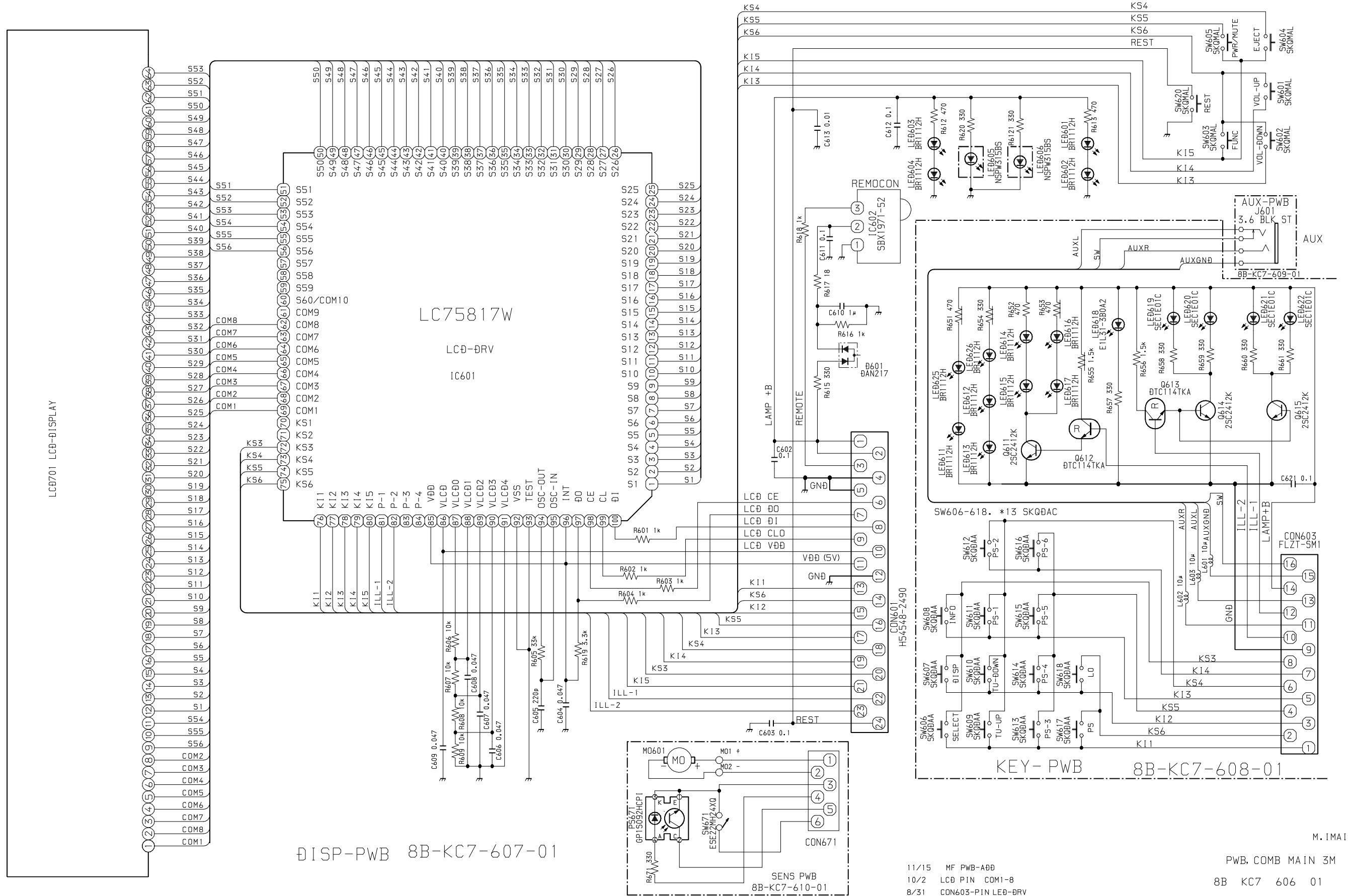


B-BKC-6 (MP3) P1

8B-KC7-602-01

M. IMAI
 PWB, COMB MAIN
 8B KCF 601 01
 C0100293
 BKC-6 MP3
 2001 03 21

SCHEMATIC DIAGRAM - 2 (FRONT)



DISP-PWB 8B-KC7-607-01

SENS PWB 8B-KC7-610-01

11/15 MF PWB-ADD
10/2 LCD PIN COM1-8
8/31 CON603-PIN LED-DRV

M. IMAI
PWB, COMB MAIN 3M
8B KC7 606 01
C0100295
BKC-1-7 FRONT
2001 03 14

アイワ株式会社 〒110-8710 東京都台東区池之端1-2-11 ☎03(3827)3111 (代表)
AIWA CO.,LTD. 2-11, IKENOHATA 1-CHOME, TAITO-KU, TOKYO 110, JAPAN TEL:03 (3827) 3111